

# *Autism*

"Is a miraculous experience with proper  
assistance."

**Dr. Carolyn Fuentes**



Design and Art Concept: Dr. Carolyn Fuentes

## **AUTISM**

© Copyright 2007 Carolyn Fuentes, Ed.D

All rights reserved. Printed in the United States of America. Except as permitted under the United States Copyright Act of 1976, no part of this publication may be reproduced or distributed in any form or by any means, or stored in a database or retrieval system, without the prior written permission of the publisher.

First Edition, printed by LuLu.com

ISBN: 978-0-6151-5559-3



I am indebted to my son, Aeric, for his support and wonderful integrity that inspired me to collaborate his autistic life and this research. Through his eyes were the windows of my search for thorough information to reach out to

the public.

Also, I am very grateful to my other son, Tony, for his advocacy with Aeric through his most sensitive growing moments. Tony's patience, communication, and a wide range of skills were tools for Aeric to function in a much easier manner.

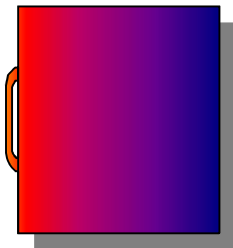
Finally, I am especially grateful to my mother, Mariah, for believing in my work and dear friend, Shawn for her encouragement.



**\*\* TABLE OF CONTENTS \*\***

Chapter 1: Introduction . . . . .	1
Chapter 2: Hypothesis . . . . .	4
Chapter 3: Onset of Autism . . . . .	6
Chapter 4: Aeric's Life . . . . .	11
Chapter 5: Characteristics of Autism . . . . .	15
Chapter 6: Facts about Autism . . . . .	18
Chapter 7: Managing Behavior . . . . .	25
Chapter 8: Medications, Treatments, and Foods . . . . .	29
Chapter 9: Foods That Slow Down the Brain . . . . .	35
Chapter 10: The Controversial Issues of What Causes Autism	45
Chapter 11: Autism and Vaccines . . . . .	54
Chapter 12: MSG and Autism . . . . .	57
Chapter 13: Dr. Rebecca (Roczen) Carley . . . . .	68
Chapter 14: Testing for Autism . . . . .	76
Chapter 15: Advantages of CMA in Testing for Autism . . . . .	78
Chapter 16: Other Genetic Testing for Autism . . . . .	80
Chapter 17: Famous People with Autism . . . . .	82

Chapter 18: Temple Grandin, PH.D. . . . .	88
Chapter 19: Choosing the Right Job for People with Autism or Asperger's Syndrome . . . . .	114
Chapter 20: Dr. Laurent Mottron . . . . .	131
Chapter 21: Sibling Needs - Helpful Information for Parents by Dr. Berenda Timmons Schubert . . . . .	133
Chapter 22: The Essential Guide to Autism . . . . .	140
Chapter 23: My Conclusion . . . . .	144



## ABOUT THE AUTHOR

Carolyn Fuentes, Ed.D., Masters, B.A., Education.

Dr. Fuentes is a native Clevelander, which is a forever career student. She has achieved her education through traditional and non-traditional colleges. As an educational and technology teacher, she has taught computer software at local community colleges, industry, suburban schools, and elite communities for over 5 years. In addition to technology, Dr. Fuentes has been affiliated in the world of computers for over 20 years that has provided her training to produce computer literacy for all types of people, which include some ABE, mainstream, ADD, ADHD, and Autism.

Dr. Fuentes has been affiliated with Quia.com, a teaching site for professional teachers to create and develop curriculums into learning games, since 2001. The site is an online resource for students to learn all types of educational subjects. There are many #1 fun and educational games on this site that reaches out nationally and

## ABOUT THE AUTHOR – Continuation

internationally to schools, colleges, universities, training centers, etc.

In addition, she has volunteered to teach unprivileged students in a community college that were eager to learn computers and other subjects, which she was awarded with a certificate for her dedication and work. Recently, she was presented with an award and membership of the Madison Who's Who Professionals and Executives 2007-2008, and other affiliations that present web awards, and memberships for business.



## Chapter 1

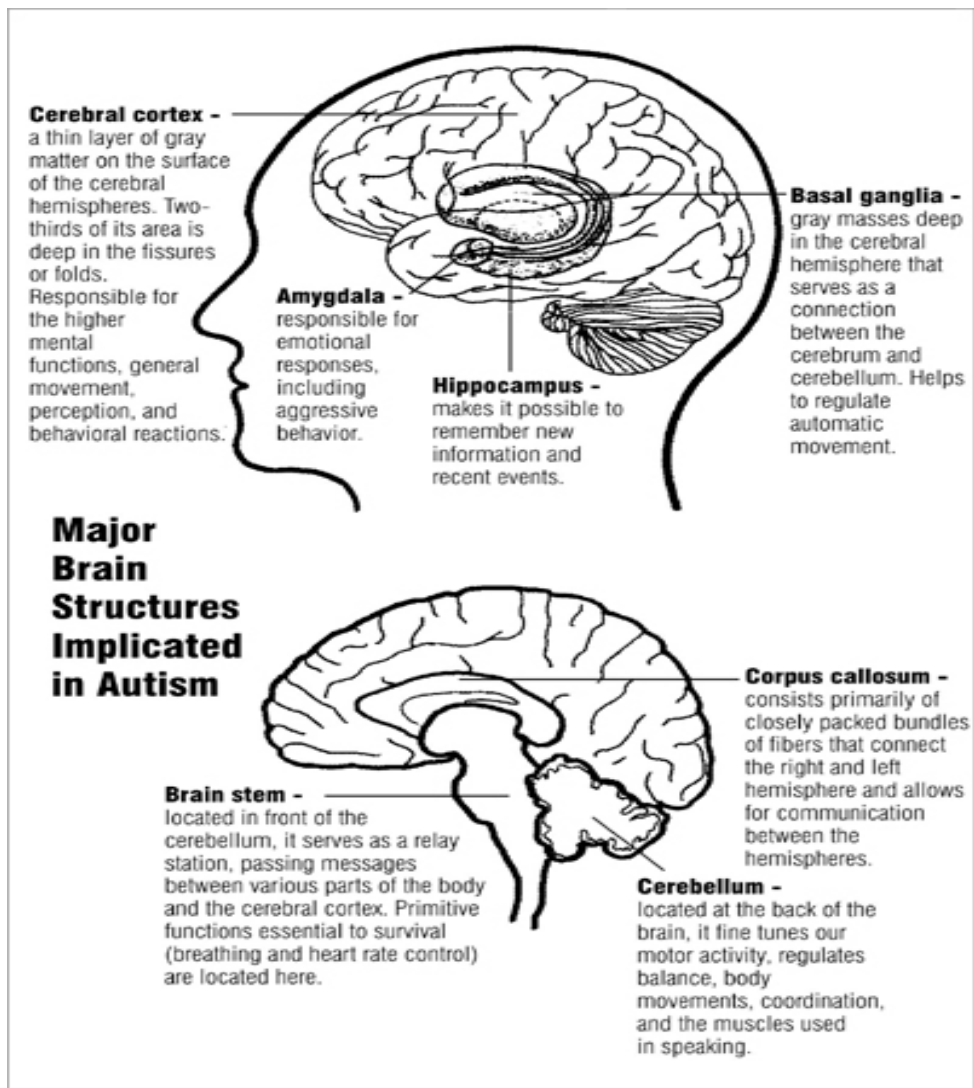
### \*\* INTRODUCTION \*\*

#### **AUTISM**

Autism is a persistent developmental disorder, which is characterized by impairments in communication and social interaction, restricted, repetitive, and stereotype patterns of behavior, interests, and activities. It is a complex disorder that affects the functioning of the brain. An autistic brain has a cerebrum larger than normal and a cerebellum smaller than normal.

Usually this disorder is detected within the first three years of life. Based on it being biological, no known factors in the psychological environment of a child have been shown to cause

autism. Many researchers have come to some understanding on the origin of this disorder. The disorder affects many parts of an individual, including sensory, cognitive, social, and language.



9-1 Research on the Biologic Basis of ASD - Citation of the National Institute of Mental Health as the source is appreciated. NIH Publication No.04-5511 April 2005



## Chapter 2

### \*\* HYPOTHESIS \*\*

Autism sometimes is associated with mental retardation. Other associated names of autism are infantile autism, early infantile autism, autistic disorder, or Kanner's syndrome. Dr. Leo Kanner, in 1943, released a report of 11 children who were highly interested in unusual aspects of the lifeless environment. At one point in many reports, autism was associated with schizophrenia. It took many years before researchers and clinicians could be sure that autism and schizophrenia were different. The disorder is associated with various kinds of neurobiological symptoms, which range from the persistence unusual reflexes.

Autism can vary in many degrees of symptoms. Children, by the age of three or four, display

(repetition of a word or sentence just spoken by another person), deficiencies in symbolic thinking, stereotypic/repetitive behavior, self-injury behavior, seizures, and mental retardation (Rapin 1997).



## Chapter 3

### \*\* ONSET OF AUTISM \*\*

#### **EARLY ONSET VS. REGRESSION**

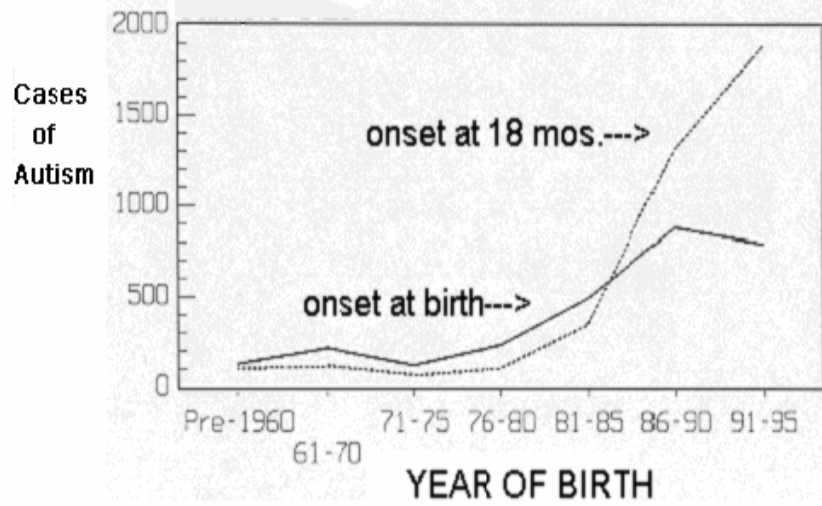
Generally, autism develops during pregnancy and the first three years of life. In some aspects, parents reported that their child seemed different at birth, which refers to early-onset autism. Other parents report that their child seemed to develop normally and then had a major regression resulting in autism, usually around 12 to 24 months. These children are referred as late-onset or regressive autism. In fact, some researchers argue that the regression is not real or the autism was simply unnoticed by the child's parents. However, many parents report that their children were completely normal (e.g., speech,

behavior, social) until sometime between one and two years of age.

The possible fundamental role of vaccinations, many of which were added to the vaccination schedule in the 1980s, is a matter of considerable controversy at present.

One recent study, conducted compared 53 autistic children with 48 typical peers. The parents of the early-onset autism group reported a significant delay in reaching developmental milestones, including age of crawling (two-month delay), sitting up (two-month delay), walking (four to five month delay), and talking (eleven month delay or more). Thus, there appeared to be a delay in gross motor skills as well as of talking, so many children with autism also need physical therapy. In contrast, the late-onset autism group reached developmental milestones at the same time as typical children.

Prior to 1990, approximately two-thirds of autistic children were autistic from birth, and one-third regressed sometime after age one year. Starting in the 1980s, the trend has reversed fewer than one-third are now autistic from birth, and two-thirds become autistic in their second year (see figure below). The following results are based on the responses to ARI's E-2 checklist, which has been completed by thousands of autism families. These results suggest that something happened, such as increased exposure to an environmental insult, possibly vaccine damage, between ages one and two years.



12 -1 Cases of Autism

Several brain autopsy studies have indicated that brain damage occurred sometime during the first trimester of pregnancy, but many of these studies involved individuals who were born prior to 1990. Thus, these findings may not apply to what appears to be the new population of regressive autism. (Advice for Parents of Young Autistic Children, 2004.)



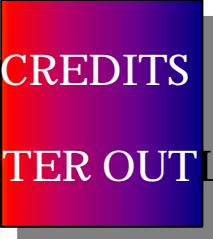
**\*\* REFERENCE FOR FURTHER READING \*\***

1. Autism Links: <http://www.autismsupport.org/autlinks.html>
2. Autism Information: <http://trainland.tripod.com/autism.htm>
3. Autistic Support Teachers:  
<http://www.angelfire.com/pa5/as/asteachersites.html>
4. Autism Resources: <http://www.asws.org/resources.html>
5. Center for the Study of Autism: <http://www.autism.org/contents.html>
6. Music Therapy & Autism: <http://www.bsu.edu/web/kdhouston/PPIS3/tsld002.htm>
7. Autism Today: <http://www.autismtoday.com/register.asp>
8. Resources for General Education and Special Education: <http://homepages.luc.edu/~hweiman/page3ed.html>
9. Asperser's Syndrome:  
<http://staff.washington.edu/chudler/asp.html>
10. IEP Sample: <http://www.untangleautism.org/0700aut1.htm>



**\*\* TABLES AND FIGURES \*\***

<i>Figure 9-1.</i>	<i>Research on the Biologic Basis of ASD</i>
<i>Figure 12-1.</i>	<i>Cases of Autism - Year of Birth</i>
<i>Figure 43-1.</i>	<i>Dr. Carley's "Hippocrates Protocol"</i>
<i>Figure 48-1.</i>	<i>Einstein's Brain - The Original Caption</i>
<i>Table 60-1.</i>	<i>Autism Subtypes</i>
<i>Figure 65-1.</i>	<i>Worksheet for Autism - The National Autistic Society</i>
<i>Table 68-1.</i>	<i>Bad Jobs for People with High Functioning Autism or ASD</i>
<i>Table 69-1.</i>	<i>Good Jobs for Visual Thinkers</i>
<i>Table 71-1.</i>	<i>Good Jobs for Non-Visual Thinkers</i>
<i>Table 72-1.</i>	<i>Jobs for Nonverbal People with autism or People with Poor Verbal Skills</i>



**CREDITS**

**\*\* CHAPTER OUTLINE \*\***

### **Chapter 1**

An autistic brain has a cerebrum larger than normal and a cerebellum smaller than normal. Usually this disorder is detected within the first three years of life.

### **Chapter 2**

Dr. Leo Kanner, in 1943, released a report of eleven children who were highly interested in unusual aspects of the lifeless environment. The discovery was called the Kanner's syndrome.

### **Chapter 3**

A child can show symptoms at birth, which is preferred as the "on-set" stage, during and their 1<sup>st</sup> and 2<sup>nd</sup> year, which is preferred as the "regression" stage.

#### **Chapter 4**

Aeric, my son was wrongfully diagnosed during his earlier ages, until I attended a seminar with guest speaker, Dr. Cannon, affiliated with the Preventive Medical Group, has done a study on sulfur, which is an individual element that makes up an important part of proteins responsible for hair, muscles, skin, etc. Sulfur is known to treat many disorders that tie into autism.

#### **Chapter 5**

Autism affects communication and body language. Social interaction is the most overlooked part of an autistic person's life, in which they will withdraw from friends, etc. Their behavior is unlike other handicaps.

#### **Chapter 6**

Autism usually begins before the age of three and is a life-long disability. This disability involves difficulty in mingling with others and a tendency of repetitive, peculiar behaviors as well. Research has also shown that the Rett

syndrome was first discovered by Andreas Rett in 1966 and is a neurological disorder affecting mainly females.

### **Chapter 7**

The behavior of autism can be developed through a collaborative problem-solving process involving mentors, parents, teachers, and special educators that the child takes heed to. Also, the learning styles are much different in an autistic person than any other disability.

### **Chapter 8**

Today, there are many medications that have been commonly used for the past five years for autism, but they are not for the entire body. Medications that help the aggressive behaviors fall into several categories

### **Chapter 9**

According to a handout used in the Detroit autism conference, dated April, 2002, "anti-yeast" therapy helps in autism. The *Candida albicans* grow in the intestinal tract. *Candida albicans* make toxic chemicals that hurt the developing brain. This type of element mainly affects the female genital tract.

Bacteria are also a resident inside of the intestinal tract, sharing space with yeast. Yeast makes chemicals that kill bacteria and enable the yeast to grow at a higher level, even after the antibiotics have been stopped.

### **Chapter 10**

In June 2000, government scientists and some health officials discovered, through the medical records of 100,000 children, that a mercury-based preservative in the vaccines/thimerosal/appeared to be responsible for a dramatic increase in autism and many other disorders among children. Since 1991, when the CDC and the FDA recommended that three additional vaccines laced with the preservative be given to extremely young infants, within hours of birth in one case, the estimated number of cases of autism increased fifteen-fold, from one in every 2,500 children to one in 166 children.

### **Chapter 11**

Issues between vaccines and autism developed in the 1990s and intensified in 1998 after reports of a study of 12 children showed reoccurring autism and gastrointestinal disease (Wakefield et al 1998). In 2001, a committee of the Institute

of Medicine at the National Academy of Sciences addressed that MMR vaccines and autism spectrum disorders were related.

### **Chapter 12**

Today, the most recent researched information that plays a role in autism is two areas of the genome monosodium glutamate (MSG) Meaning free glutamic acid plays a role in the rise of autism. Perhaps autistic children and children with MSG sensitivity who are also sulfite sensitive have this error of metabolism in common.

### **Chapter 13**

Dr. Rebecca Carley, trained as a surgeon at State University of New York in Brooklyn, developed the "Hippocrates Protocol," which has successfully reversed all autoimmune diseases (including autism) and cancer in over 1,000 clients (including pets) over the past seven years.

**Chapter 14**

Chromosomal Microarray Analysis (CMA) is a new genetic test that has major advantages over existing chromosomal testing for autism. The test uses a DNA chip and comparative genomic hybridization (CGH) to test for increased or decreased dosage of more than 60 chromosomal regions of known diagnostic significance.

**Chapter 15**

CMA testing for autism, such as FISH tests, provides a superior alternative for diagnosing developmental disabilities, mental retardation, and all other disorders.

**Chapter 16**

Other genetic tests for autism are routine Giemsa banded karyotype, plasma quantitative amino acid analysis, and more.

**Chapter 17**

Amongst many famous people with autism was once Hans Albert Einstein. His career was devoted to complex mathematics. His dedication and theories of math were more extreme to solve a problem than any normal person. Einstein, as a child was a loner and a late speaker. He repeated sentences obsessively up

to the age of seven. In addition, there are many other famous people's relatives that have this disability as well.

### **Chapter 18**

Dr. Temple Grandin struggled during her earlier development and throughout her graduate life as a professor. She wrote *Emergence: Labeled Autistic* in 1986 and *Thinking in Pictures and Other Reports from My Life with Autism* (Vintage Books) in 1996, which was voted a Cerebrum "Great Brain Book" in the spring of 1999.

### **Chapter 19**

In this chapter, Dr. Temple Grandin devotes her time in explaining what is the right job for people with autism or Asperger's syndrome in full details from Tables 1-4.

### **Chapter 20**

Dr. Laurent Mottron, an autism researcher and clinician at Montreal Hospital Riviere des Praires, believes that the wrong intelligence tests are used to assess autistic children. The Raven's Progressive Matrices test measures abstract reasoning and consistently gives autistic children higher scores according to Dr. Mottron.

**Chapter 21**

Dr. Derenda Timmons Schubert works with the Pacific Northwest Children's Services and did an interesting study on preschoolers, elementary schoolchildren, and adolescents.

**Chapter 22**

Rachel Evans, bionetics, and Jean Genet, *Myths of Autism* have written many materials related to autism in 2006. They have stated that autism increased by 172% during 1990s and is associated with 75-80% of individuals with retardation.

**Chapter 23**

In my conclusion, I have stated that during the '70s, approximately 27 years ago, autistic people were mainly institutionalized. Today, arrangements are more flexible. Of course, many of the severe individuals still remain in institutions.

