

Greek 2a

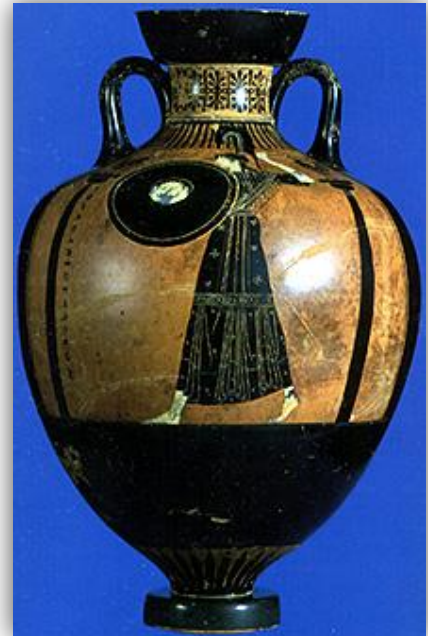
ἡ Ἀθῆνη Πρόμαχος

Fall Class Syllabus
Regan Barr, Instructor

Welcome! I'm glad you've decided to continue your study of the Greek language for a second year. You'll finish your study of Greek grammar this year, and be ready to jump into full-fledged Greek texts!

Textbook: *Athenaze, Book II*, 2nd ed., by Balme & Lawall (Oxford University Press, 2003)

Class Web Page: <http://www.quia.com/pages/rbarr/2011lukegrk2a>
The class webpage provides access to quizzes, online homework submission forms, and activities to assist the student in mastering new vocabulary and grammar concepts.



Our Schedule: This year we have 14 chapters (fewer than Book I), again divided into sections, usually just two: Alpha (α) and Beta (β). We'll have weekly quizzes again this year – this will help BOTH you and me. Quizzes following the Alpha (α) section will be mostly, or entirely computer graded and the results will be available to you immediately upon completion. The chapter quizzes have instructor-graded questions, and the results will not be available until I have a chance to grade those.

Week	Class Date	Chapter	Quiz Dates
1	Aug 23	17 α	Aug 26 – 29
2	Aug 30	17 β	Sept 2 – 5
3	Sept 6	18 α	Sept 9 – 12
4	Sept 13	18 β	Sept 16 – 19
5	Sept 20	19 α	Sept 23 – 26
6	Sept 27	19 β	Sept 30 – Oct 3
7	Oct 4	20 α	Oct 7 – 10
8	Oct 11	20 β	Oct 14 – 17
9	Oct 18	21 α	Oct 21 – 24
10	Oct 25	21 β	Oct 28 – 31
11	Nov 1	22 α	Nov 4 – 7
12	Nov 8	22 β	Nov 11 – 14
13	Nov 15	23 α	Nov 18 – 21
14	Nov 22	No Class - Thanksgiving!	
15	Nov 29	23 β	Dec 3 – 7
16	Dec 6	Finals Week – No Class	

A Note about Studying a Language

Here's the simple truth – some people might appear to be “good at languages,” but no one is truly “bad at languages.” Everyone can learn a new language. The most important factor is *daily hard work*. Cram sessions DO NOT work with languages; you must have regular exposure to it. You need to work with a language *daily* to truly master it. And that means *work* with the language – not just mess around near your book. Practice vocabulary. Write out forms. Translate. Do some every day and you will succeed.

Course expectations and requirements

Students are expected to

- Attend weekly classes and arrive on time
- Complete all required assignments on time and without frequent reminders by the instructor
- Use both their text book and the class discussion to achieve mastery of the Greek language
- Submit homework and take quizzes as stipulated in other parts of this syllabus

Quizzes and Exams:

- Quizzes will be administered weekly and a Final Exam is scheduled for the last week of the semester.
 - Vocabulary/form quizzes will be computer graded
 - Chapter quizzes will include questions that require instructor grading
- All quizzes will be administered through the class web page. Each will have a due date and a time-limit. You must complete and submit your test within the time allotted, and before the published deadline.
- Quizzes are available from noon Friday through 5:00 p.m. Monday.

Typing in Greek on your Computer:

EVERY computer is already equipped to type in Greek even if you weren't aware of it.

FONTS: “Unicode” is a font standard that uses the same “code” for a given character, no matter what language the character belongs to or what font is being used. To insure that your documents can be read on other computers, use only Unicode fonts. All Unicode fonts now support some Greek characters (check out the “symbols” in Times New Roman), but some support more than others. All students are expected to have the free font *IFA0-Grec* installed on their computers.

KEYBOARDS: Don't worry – you don't have to purchase new hardware. Although all computers make allowance for typing in other alphabets, I prefer a program that will temporarily *re-map* your keyboard (called a “keyboard shift”) to the correct Greek Unicode characters. After installing the program, you simply press *Alt-Z* to toggle between English and Greek.

I USE: I recommend and use a program called “Keyman Desktop Light” which you can purchase for about \$25 at this web page: <http://www.tavultesoft.com/keyman/>. The “light” version allows you to choose 2 free keyboard maps, and you need to choose the “Greek Classical” keyboard. This program allows you to toggle back and forth between your normal English keyboard and the Greek keyboard.

Homework:

- **Schedule:** Homework must be submitted through the online form (accessed through the class webpage) by Saturday evening at 5:00 p.m. each week
- **Submitting Homework:** Homework will be submitted through the class web page. Homework will have a due date and time, but there is no time-limit on how long you may spend entering your homework as long as you finish prior to the deadline. The online submission process requires that you enter all your homework in one online session, so I recommend completing it in a separate saved document and simply copying and pasting it into the online homework form when you're ready.
- **Assignments:** Each week you will translate one or more passages from Greek into English and complete additional assignments from your textbook. You may also be asked to translate English sentences into Greek – arguably the most difficult homework assignment, but also the one with the greatest rewards.
- **Recommended Study Pattern:** Vocabulary should be studied daily. New word patterns and forms should be studied regularly and repeatedly. Your homework will be the most effective if you spend time on these before you begin your homework. I suggest following a schedule similar to this one:
 - Tuesday: Read new material in text; practice vocabulary and new grammar; read homework
 - Wednesday: Practice vocabulary and new grammar; do 1/3 of homework
 - Thursday: Practice vocabulary and new grammar: do 1/3 of homework
 - Friday: Practice vocabulary and new grammar: finish homework
 - Saturday: Practice vocabulary and new grammar: review homework and submit
 - Sunday – Monday: Practice vocabulary and new grammar; practice sight-reading your translation

Two-Way Classroom Audio:

Our classroom supports two-way computer audio, and you will need a microphone to speak in class. A headset that includes both earphones and a microphone is preferable.

Contacting Me:

Email at regan@lukeion.org, or by phone if it's an emergency: (919) 342-6840