

## Introduction to Ecology

### **Background:**

Define the following terms commonly used in ecology.

Abiotic

Factors which aren't alive and were never alive.

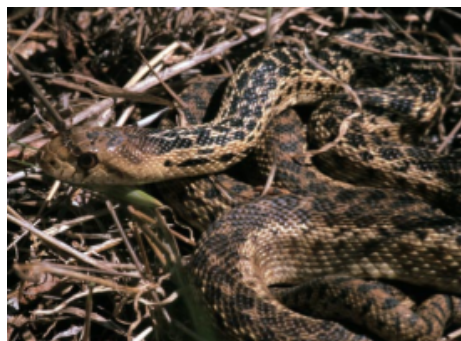
Biotic

Factors which are alive or were once alive.

The following are arranged from smallest to largest size.

Individual

A single living organism



## Population

Two or more of the same kind of living organism within a certain area.



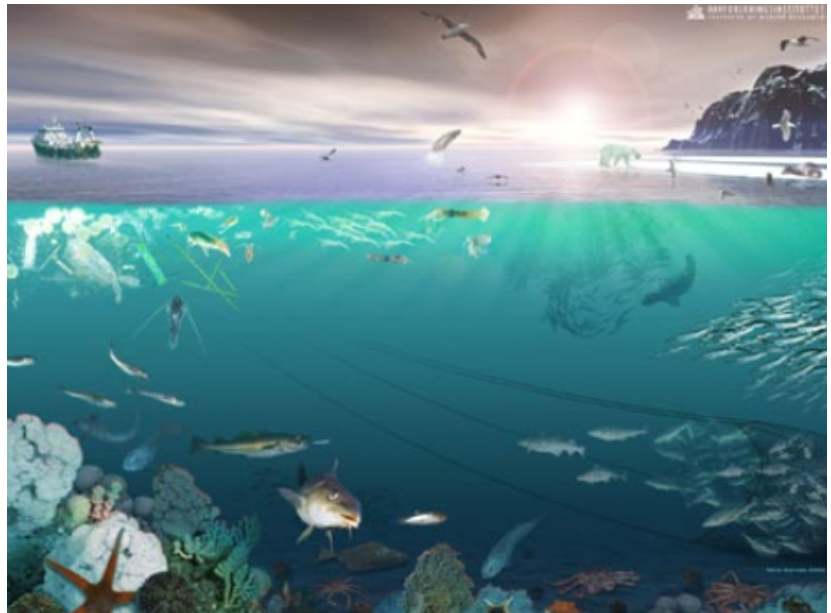
## Community

Two or more populations of organisms within a certain area



## Ecosystem

A community with the abiotic factors added to it in a certain area



## Biosphere (Ecosphere)

The thin layer of Earth where living organisms are found. This includes going down into the soil and rocks, to the bottom of the ocean floor and up into the atmosphere.

