

Unit 2 Student Study Pages

BASS 5

Name _____

I. Practice Hints

A. Check your playing position

1. Pizzicato Position or Bow Hold

2. Instrument Hold: Now the left hand must be positioned so that your fingers can make new notes. Each finger that you use to push the string down to the fingerboard makes a new note.

3. Posture

B. Practice carefully, with a steady beat.

C. Below are some ostinati (a repeated pattern that acts as harmony) and song fragments (parts of songs) so that you can learn notes made by placing your left hand fingers on the fingerboard.

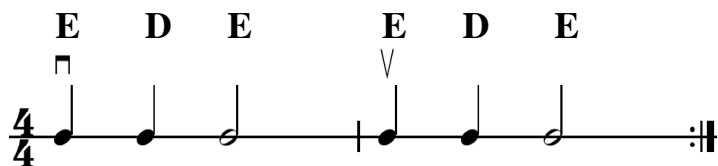
D. Write in the finger number by each note name if this helps you.

II. New Notes and Songs

A. Left hand fingers make notes above the open strings. Make sure your left hand is placed correctly so that the fingers are ready to play notes, even if the song starts on an open string note.

B. **New Note E:** All instruments place the first finger on the D string.

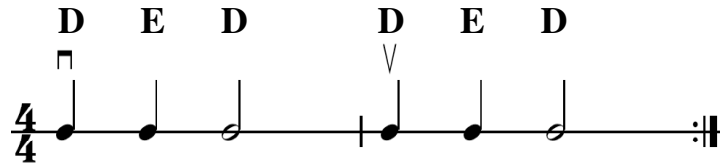
1. This ostinato will harmonize either "**Ghost of John**" or "**Canoe Song**." A repeat sign (:||) means to play the music again. Notice how the repeat is different from the double bar. Repeat several times, until the song's melody is over.



Ghost of John
Or
Canoe Song



2. This ostinato will harmonize with "Old MacDonald."



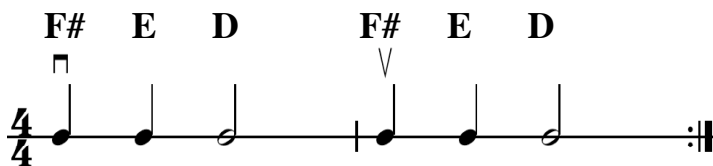
Old
MacDonald

C. **New Note F#:** Violins/Violas place first and second fingers on the D string.

Celli place first, second and third fingers on the D string.

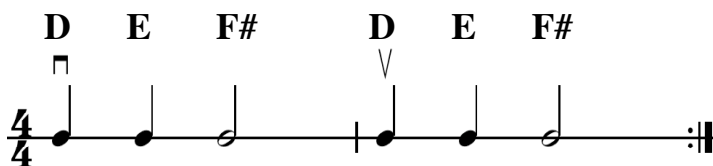
Basses place first, second, third, and fourth fingers on the D string.

1. This ostinato harmonizes "Three Blind Mice"



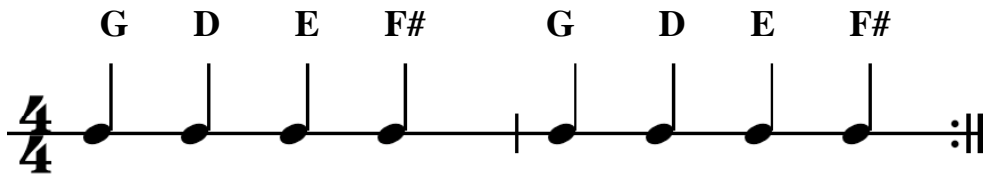
*Three
Blind
Mice*

2. This ostinato harmonizes "Frere Jacques"



*Frere
Jacques*

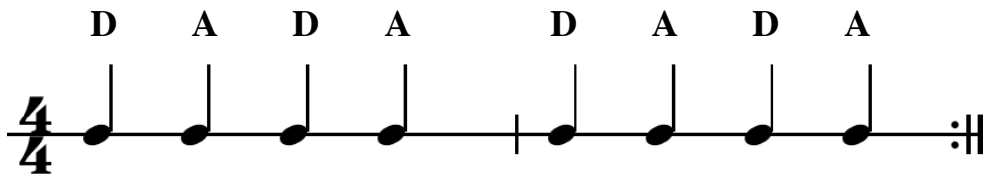
2. "The Baseball Song" is another song fragment using D, E, F#, and G.



The
Baseball
Song

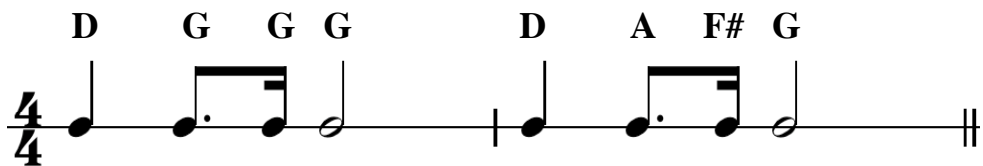
E. Adding open A

1. "The Spinning Song" can be harmonized with quarter notes, open A and open D. The bow crosses strings. First start down bow, then try starting up bow. Keep a relaxed right wrist!



*The
Spinning
Song*

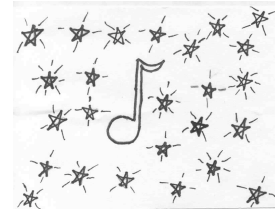
2. "Bridal Chorus" ("Here Comes the Bride") is a song fragment played with notes on the D string, plus open A. Basses: you'll need a new note for this one. When the song calls for "A," place one finger on the G string. This can be called "high A" for you, to differentiate between it and open A.



*Here
Comes
the
Bride*

*Twinkle
Variations*

D A B A
G F# E D
||: A G F# E :||
D A B A
G F# E D



Now try the theme, "Twinkle," as you would sing it. Notice that the last note in each line of music is a half note, instead of two quarter notes. Make your bow straight on the strings, and give it lots of weight for a full, rich tone.

D D A A B B A

G G F# F# E E D

A A G G F# F# E

D D A A B B A

G G F# F# E E D

Twinkle,
Twinkle,
Little
Star

Twinkle, Twinkle, Little Star

Alternate
Bass Part

D D A A G G D

4/4

G G D D E E D

V

D D G G D D E

||: :||

D D A A G G D

G G D D E E D

5. Can you sound out the beginning to "Joy to the World?"
Hint: start on high D!

6. Congratulations! Here is an entire song using all the notes of the D Major scale. It is called "French Folk Song." Note that each line of music begins down bow (▣), and each line of music ends up bow (∇). Make sure the sound remains continuous on these long up bows.

French Folk Song

(high) D D D C# C# C# B C# D (high) A

3/4 ▣ ∇

G G G F# F# F# E E E (open) D

▣ ∇

(open) D E F# D E F# D E F# G

▣ ∇

E F# G E F# G E F# G A

▣ ∇

(high) D C# B A G F# E (open) D E D

▣ ∇

**French Folk
Song**

*Alternate
Bass Part*

D D D A A A G G G D

A musical staff in 3/4 time. The notes are quarter notes: D, D, D, A, A, A, G, G, G, and a dotted half note D. A small square symbol is above the first note, and a downward-pointing V is above the final note.

E E E D D D A A A D

A musical staff in 3/4 time. The notes are quarter notes: E, E, E, D, D, D, A, A, A, and a dotted half note D. A small square symbol is above the first note, and a downward-pointing V is above the final note.

D D D D D D D D A

A musical staff in 3/4 time. The notes are quarter notes: D, D, D, D, D, D, D, D, D, and a dotted half note A. A small square symbol is above the first note, and a downward-pointing V is above the final note.

A A A A A A A A A D

A musical staff in 3/4 time. The notes are quarter notes: A, A, A, A, A, A, A, A, A, and a dotted half note D. A small square symbol is above the first note, and a downward-pointing V is above the final note.

D D D D D D A A A D

A musical staff in 3/4 time. The notes are quarter notes: D, D, D, D, D, D, A, A, A, and a dotted half note D. A small square symbol is above the first note, and a downward-pointing V is above the final note. The staff ends with a double bar line.

JINGLE BELLS

F# F# F# F# F# F#

A musical staff in 4/4 time. The notes are: quarter note F#, quarter note F#, half note F#, quarter rest, quarter note F#, quarter note F#, half note F#.

F# A D E F#

A musical staff in 4/4 time. The notes are: quarter note F#, quarter note A, quarter note D, quarter note E, quarter note F#, quarter rest, quarter rest.

G G G G G F# F# F#

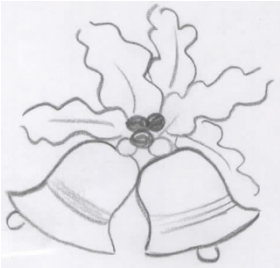
A musical staff in 4/4 time. The notes are: quarter note G, quarter note G, quarter note G, quarter note G, quarter note G, quarter note F#, quarter note F#, quarter note F#.

F# E E F# E A

A musical staff in 4/4 time. The notes are: quarter note F#, quarter note E, quarter note E, quarter note F#, quarter note E, quarter note A. A first ending bracket spans the entire staff, ending with a repeat sign.

A A G E D

A musical staff in 4/4 time. The notes are: quarter note A, quarter note A, quarter note G, quarter note E, quarter note D, quarter rest. A second ending bracket spans the entire staff, ending with a repeat sign.



WHAT YOU SHOULD KNOW

Melody

Ostinato

Song Fragment

Double Bar Line

Repeat Sign

Down Bow, Up Bow

Bow Lift

First Ending, Second Ending

(high)

Notes of the D Major Scale: D, E, F#, G, A, B, C#, D

Open String Notes