

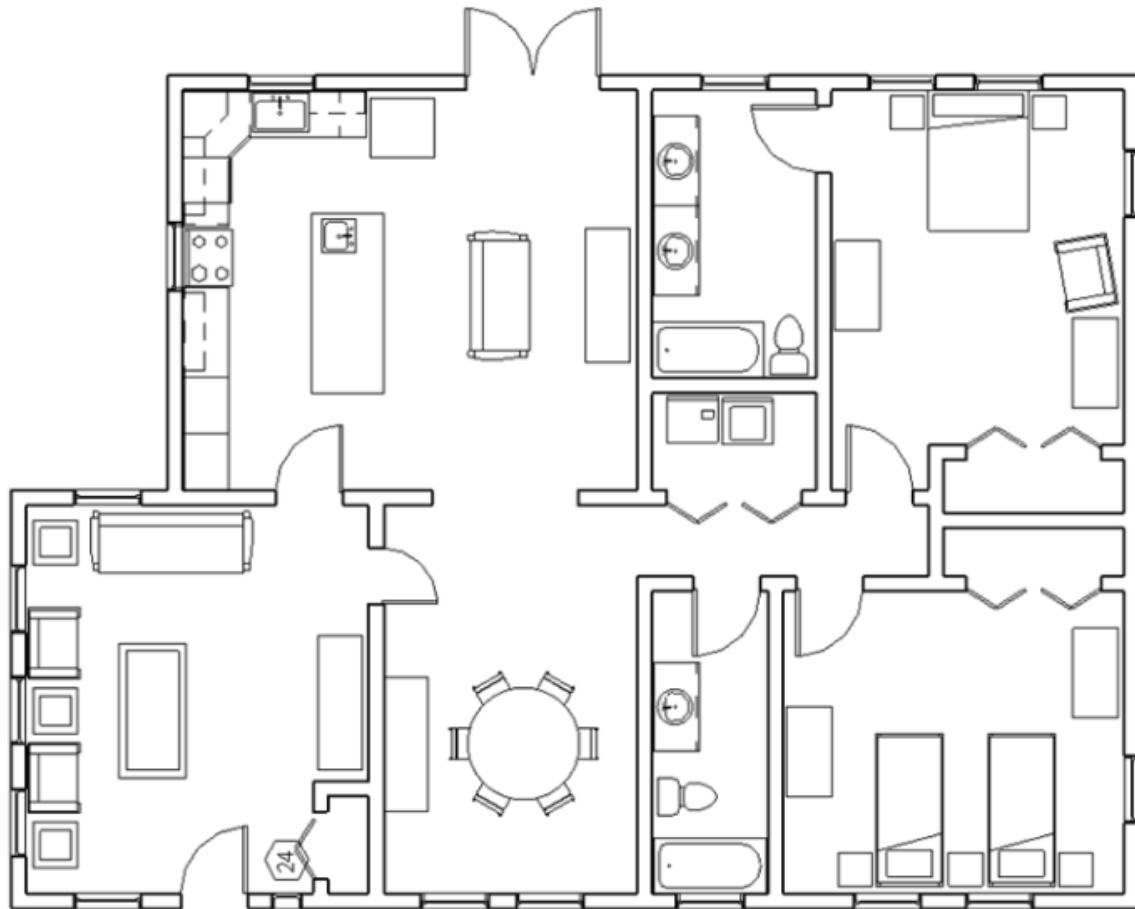
Activity 1.10

## Reading a Floor Plan

### INTRODUCTION

**Floor plans** are scale diagrams of a room or floor of a house or building drawn by an **architect**. Floor plans will show the location of walls, doors, and windows, as well as built-in features like cabinets and fireplaces as you look down on them (birds-eye view).

It is the house floor plan that will clearly give the homeowner the complete idea about the dimensions for each room and the square footage. With the floor plans, the homeowners can decide how many rooms there will be and how they will be distributed.




In this activity you will practice reading a floor plan and calculating the **area** and **perimeter** of rooms.

## Procedure



Answer the questions below in your notebook for the floor plan that you have chosen.

- 1 Floor Plan # #1
- 2 What types of room(s) are on your floor plan? (bedroom, kitchen, etc.)
- 3 To what area does each room belong? (sleeping, service, living)
- 4 List the types of furniture, fixtures , and appliances you see in each of the room(s):

Room 1	Room 2	Room 3 (if on floor plan)

- 5 How many windows are in the floor plan?
- 6 How many doors are in the floor plan?
- 7 Using the scale  $\frac{1}{4}" = 1'$ , what is the size (length x width) of the 1<sup>st</sup> room?
- 8 Using the scale  $\frac{1}{4}" = 1'$ , what is the size (length x width) of the 2<sup>nd</sup> room?
- 9 Using the scale  $\frac{1}{4}" = 1'$ , what is the size (length x width) of the 3<sup>rd</sup> room?




Only complete questions 7, 8 and 9 if you have access to an architectural ruler...DO THE SAME FOR FLOOR PLAN 2, 3, AND 4

## Procedure



Answer the questions below in your notebook for the floor plan that you have chosen.

- 1 Floor Plan # #2
- 2 What types of room(s) are on your floor plan? (bedroom, kitchen, etc.)
- 3 To what area does each room belong? (sleeping, service, living)
- 4 List the types of furniture, fixtures , and appliances you see in each of the room(s):


Room 1	Room 2	Room 3 (if on floor plan)

- 5 How many windows are in the floor plan?
  - 6 How many doors are in the floor plan?
  - 7 Using the scale  $\frac{1}{4}" = 1'$ , what is the size (length x width) of the 1<sup>st</sup> room?
  - 8 Using the scale  $\frac{1}{4}" = 1'$ , what is the size (length x width) of the 2<sup>nd</sup> room?
  - 9 Using the scale  $\frac{1}{4}" = 1'$ , what is the size (length x width) of the 3<sup>rd</sup> room?
-

## Procedure



Answer the questions below in your notebook for the floor plan that you have chosen.

- 1 Floor Plan # #3
- 2 What types of room(s) are on your floor plan? (bedroom, kitchen, etc.)
- 3 To what area does each room belong? (sleeping, service, living)
- 4 List the types of furniture, fixtures , and appliances you see in each of the room(s):


Room 1	Room 2	Room 3 (if on floor plan)

- 5 How many windows are in the floor plan?
  - 6 How many doors are in the floor plan?
  - 7 Using the scale  $\frac{1}{4}" = 1'$ , what is the size (length x width) of the 1<sup>st</sup> room?
  - 8 Using the scale  $\frac{1}{4}" = 1'$ , what is the size (length x width) of the 2<sup>nd</sup> room?
  - 9 Using the scale  $\frac{1}{4}" = 1'$ , what is the size (length x width) of the 3<sup>rd</sup> room?
-

## Procedure



Answer the questions below in your notebook for the floor plan that you have chosen.

- 1 Floor Plan # #4
- 2 What types of room(s) are on your floor plan? (bedroom, kitchen, etc.)
- 3 To what area does each room belong? (sleeping, service, living)
- 4 List the types of furniture, fixtures , and appliances you see in each of the room(s):

Room 1	Room 2	Room 3 (if on floor plan)

- 5 How many windows are in the floor plan?
  - 6 How many doors are in the floor plan?
  - 7 Using the scale  $\frac{1}{4}" = 1'$ , what is the size (length x width) of the 1<sup>st</sup> room?
  - 8 Using the scale  $\frac{1}{4}" = 1'$ , what is the size (length x width) of the 2<sup>nd</sup> room?
  - 9 Using the scale  $\frac{1}{4}" = 1'$ , what is the size (length x width) of the 3<sup>rd</sup> room?
-