


Activity 1.9

Room Sizes and Relationships Study Guide

INTRODUCTION

How do **architects**  and engineers ensure that homes are put together in a way that will be functional and pleasing to the home owner? Architectural design rules address sizing and space configuration.

In this activity you will take notes about room areas and typical sizes and arrangements.

RESOURCES



7_1_9_A_RoomSizesRelationships.pptx



I have created a PDF version of this PowerPoint...use this resource to complete this activity

Procedure

Complete the following for use as a study guide.

1

The three classifications of areas for a house are:

a.

b.

c.



2

First Area:

a. What types of rooms belong to this classification?

•

Size:

•

Size:

•

Size:

b. What characteristics do rooms in the Living Area share?

3

Second Area:

a. What types of rooms belong to this classification?

-

Size:

-

Size:

-

Size:

-

Size:

-

Size:

b. What characteristics do rooms in the Sleeping Area share?

c. When is a bathroom considered part of the Sleeping Area?

4

Third Area:

a. What types of rooms belong to this classification?

•

Size:

•

Size:

•

Size:

•

Size:

b. What characteristics do rooms in the Service Area share?

5

Definitions:

a. WC – Water Closet -

b. Lavatory -

c. ½ bath -

d. ¾ bath -

e. Full bath -

f. Master bath -

g. Working Triangle -

6

Identify the type of area by using colored pencils to lightly and neatly color the following areas in your notebook:

a. Service area – green

b. Sleeping area – blue

c. Living area – red

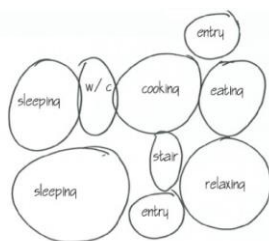


Do the best you can here



CONCLUSION

- 1 What area do you think the following rooms belong to and why?
 - a. Patio or deck –
 - b. Library –
 - c. Office –
 - d. Finished basement -
 - e. Unfinished basement -
 - f. Attic –
- 2 What rooms do you want to have in your house some day?
- 3 Architects and Engineers often use bubble diagrams to quickly get their ideas on paper. A bubble diagram could look like this:



Complete this part on a separate piece of scratch paper on drawing tool on your computer....you could take a picture and attach it to an email

In your engineering notebook or on graph paper, sketch a floor plan using bubbles that includes all of the rooms you would like to have in your house someday and their approximate sizes.

- a. It may be a one-story or two-story home, but it must contain the rooms that you listed above.
- b. Your home must contain a bedroom, a bath accessible from a hallway or living or service area (not through a bedroom), and a kitchen.
- c. All bedrooms must contain a closet.
- d. Hallways must be used appropriately.
- e. Doorways must be marked.
- f. Room dimensions must be appropriate.

4 Using colored pencils, lightly and neatly color the following areas:

- a. Service area – green
- b. Sleeping area – blue
- c. Living area – red