

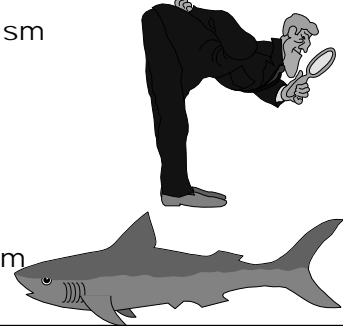
American Society at turn of Century

- urbanization
- industrialization
- immigration
- labor disputes
- gap between rich\poor
- growth of Big Business
- Impact of Freud
- Impact of Marx
- Impact of Darwin
- Impact of Spencer
- pessimism
- relativism
- nihilism
- imperialism



Literary Trends continued

- Regionalism
- Realism
- Naturalism





World War One: the Great War
1914-1918

FEED a FIGHTER
Eat only what you need -
Waste nothing -
That he and his family
may have enough

World War I: "the war to end all wars"

<ul style="list-style-type: none"> • Costs: • 8 million military deaths • 6.6 million civilian deaths • \$337 + billion • massive destruction of property near to urban areas • national pride • influenza epidemic- 20 million dead 	<ul style="list-style-type: none"> • Outcomes: • independent nations born: Czechoslovakia, Yugoslavia, Hungary, Austria • Others increase in size: Italy, France, Belgium • Allied occupation • Destruction of Germany: guilt, reparations
---	---

Technological Facts

World War One brought the use of technology for mass destruction to a new level:

- There were...submarines, tanks, poison gas, machine guns, the radio, airplanes, zeppelins, the field telephone: used successfully in the trench warfare which was the predominant mode of fighting in Western Europe.
- Man had mastered the art of killing.

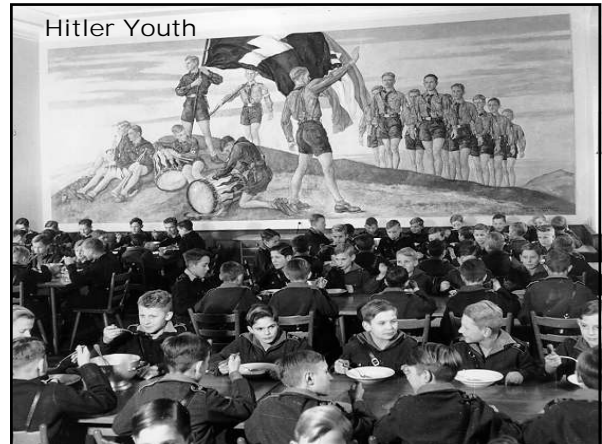
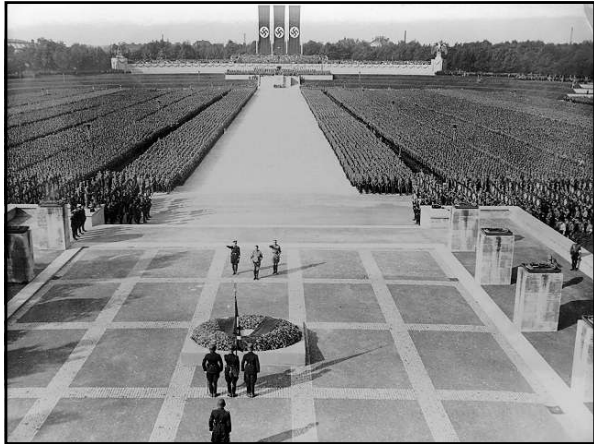
Psychological Effects of the War

- disillusionment
- isolationism in the U. S.
- individual alienation
- global recession\inflation

Totalitarianism

*sees existing society as corrupt, immoral, beyond reform, and forcibly offers an alternative.

- The Bolshevik Revolution -Russia became communist (1917)
- The Red Scare 1919-1920 -fear of communist takeover in U.S.
- Fascism took control in Eastern Europe -Hitler in Germany, Mussolini in Italy



What luck for the rulers that men do not think.
 The victor will never be asked if he told the truth.

I use emotion for the many
 and reserve reason for the few.

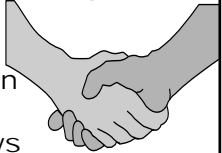
By means of shrewd lies, unremittingly repeated,
 it is possible to make people believe that heaven
 is hell-- and hell is heaven. The greater the lie,
 the more readily it will be believed.

Adolph Hitler

Progressivism

Social and Political Reforms:

- conservation of natural resources
- child-labor laws; minimum wage
- pro-organized labor
- women's suffrage
- antimonopoly legislation
- railroad legislation
- pure Food and Drug laws
- direct election of senators



PROHIBITION: The "Noble" Experiment!

1920-1933

18th amendment: prohibited the sale,
 manufacture, and transport of alcoholic beverages


Intent:

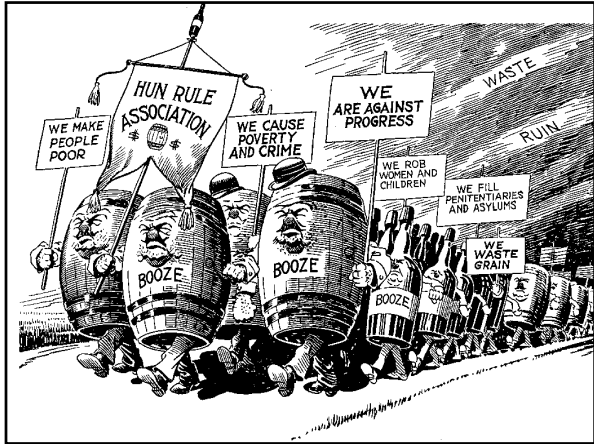
Designed to reduce crime and corruption, relieve tax
 burden of prisons and poorhouses, improve health and
 hygiene, and solve other alcohol-related problems

OUTCOME:

Court and prison systems overloaded, significant loss
 of tax revenue, alcohol became more dangerous,
 crime increased and became well organized.

+ People began to ignore the government en masse.



Organization of Labor

AFL: strikes, boycotts, political action, picketing Communist Party in U.S. (1919)

IWW: strikes, violence, sabotage and the overthrow of capitalist society -Sacco and Vanzetti (1920)

Recession: 1919-1922

Xenophobic reaction: Immigration Quotas(1924)
Anti-Semitism, Anti-Catholicism, Anti-Negroism(KKK), Anti-Alienism


Economic reaction: labor groups accused of profiting from war

ECONOMIC TRANSITION

The U.S. economy changed from:


PRODUCTION-ORIENTED

-agricultural products
skilled craftsmen



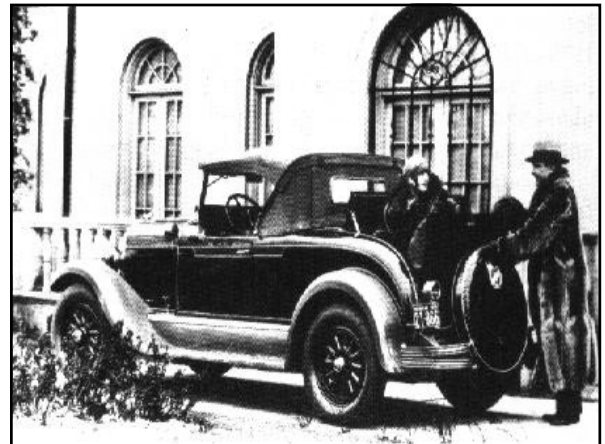
to

(mass production\consumption)



CONSUMPTION ORIENTED

-mechanical goods:
Cars, washing machines, radios, telephones, irons, refrigerators, stoves, vacuums, toasters, electric appliances of all sorts, the 35mm camera
all bought on installment credit for first time



The Modern Perspective



MODERNISM

Characteristics:

1. Aesthetic originality and rebellion
2. A determination to shatter taboos in order to express a physical and psychological actuality
3. A mystical hunger for meaning and spiritual enlightenment
4. A growing sense of responsibility for their fellow men
5. Common themes\Criticisms: uncertainty, meaninglessness of life, materialism, small-town mentality, personal isolation\alienation

Dominant Character... its intensity and the almost scientific candor of its exploration into the spiritual nature of man and the value of his society and its institutions.

IMAGISM (1909-1918)
Pound, H.D. -strove to create exact images by using precise diction

DADAISM (1914-1924)
-rejected tradition\logic
-absolute freedom
-"conscious madness" to shock and provoke change

PRIMITIVISM
-Faulkner
-Freudian\Psihological determinism
-taboo topics\subconscious
-human truths best observed in primitive conditions

SYMBOLISM
T.S.Eliot, O'Neill
-saw the immediate and personal emotional response as a goal
-reliant on allusions

SURREALISM(post WWI)
-Freudian
-expression of the imagination as realized in dreams and presented without conscious control
-saw reality as a matter of perception
-juxtaposed incompatible objects as symbols

In a Station of the Metro

The apparition of these faces in the crowd;
Petals on a wet, black bough.

Ezra Pound

Disillusionment of Ten O'Clock

The houses are haunted by white night-gowns.
None are green,
or purple with yellow rings,
or green with yellow rings,
or yellow with blue rings.
None of them are strange,
With socks of lace and beaded ceintures.
People are not going
To dream of baboons and periwinkles.
Only, here and there, an old sailor
Drunk and asleep in his boots,
Catches tigers in red weather.

-Wallace Stevens

"next to of course god america I
love you land of the pilgrims' and so forth oh
say can you see by the dawn's early my
country 'tis of centuries come and go
and are no more what of it we should worry
in every language even deafanddumb
thy sons acclaim your glorious name by gorry
by jingo by gee by gosh by gum
why talk of beauty what could be more beau-
tiful than these heroic happy dead
who rushed like lions to the roaring slaughter
they did not stop to think they died instead
then shall the voice of liberty be mute?"

He spoke, And drank rapidly a glass of water

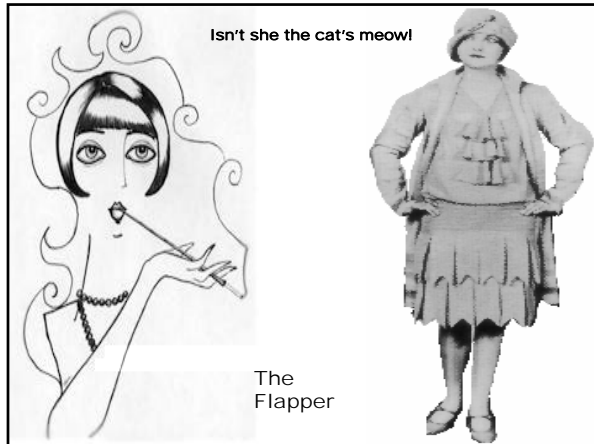
e.e.cummings

CULTURAL SHIFT

The Automobile:
Advertising: -ultimate status symbol
-created need for goods -created suburbia
-glamorized tobacco -promoted moral decay

Government:
Role\image of Women: -people ignored it
-more working outside -corruption: Blk Sox scandal,
the home\growth of retail gambling, bootlegging
-political participation
-flapper: defied traditional Entertainment:
femininity -moving pictures
-birth control -the jazz age
-radio in every home,
in cars by 1929
-the first televisions(1928)





The End
Is
coming