

Precambrian

4.5 Billion – 543 Million

Hadean Eon

4.5 billion – 3.8 billion

- No life on Earth
- Surface covered in magma
- Numerous volcanoes
- Earth's crust cools
- Hard surface forms – Earth's Crust



Magma covers the surface
Earth Forms

Archean Eon

3.8 billion – 2.5 billion

- Early life - bacteria
- Atmosphere mostly methane and ammonia
- Continents begin to form

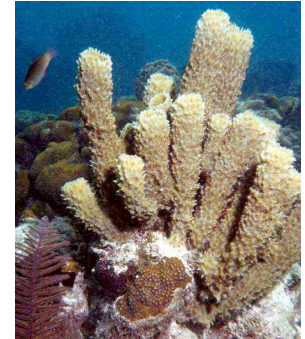


Early life – colonies of bacteria
Stromatolites

Proterozoic Eon

2.5 billion – 543 million

- Early multi-celled life - sponges
- Oxygen begins to dominate atmosphere
- Complex life forms – algae form



Multi-celled life
Sponges