

March
2011

Issue 7

Monrovia Unified School District Featuring Santa Fe School

Support the Monrovia Schools Foundation!

Did you know that you can support the Monrovia Schools Foundation and generate money for our schools by buying gift cards?

Called "Scrip", this program allows you to get the full value of the amount of the gift card you purchase, and the Monrovia Schools Foundation receives a percentage (between 1%-23%) for each card sold. Gift cards are available for local markets such as Albertsons, Ralph's and Von's. Gas cards can be

purchased for Arco, Chevron, Mobil and Shell. Starbuck's, Smart and Final, Macy's, Target and Walmart are just a few of the many different cards you can purchase to support this effort to help our schools (see attached order form). For more information, contact Kristin Reynolds at KristinReynolds@roadrunner.com or (626)358-8140.

There is an additional way to help! Your Von's club card can be linked to the Monrovia

Schools Foundation as well. Register your card online at escrip.com. Each time you use your club card at checkout, the store will automatically donate a percentage of your purchases.

Your support of our Foundation through programs such as these greatly enhances our opportunities to provide programs and resources to our students.



Santa Fe Success!

There are many wonderful things happening on the Santa Fe campus. Things are coming together because of a great combination of amazing students and great teachers.

In last year's STAR testing, Santa Fe surpassed the 800 API mark with an 814 API. Just 10 years ago Santa Fe was at a 601 API.

Santa Fe has been rec-

ognized as a California Distinguished School due to the success of its students and various academic programs.

At Santa Fe, we continue to provide all students the opportunity to succeed at the highest possible level.

Homework club is available to all students. Intervention programs have been developed to assist those

students needing extra help. Honors and pre-AP classes have been designed to challenge students at the highest possible level. With our continued service to all students, and dedication to maximizing the overall abilities of all students, it is easy to see why Santa Fe has become one of the most successful schools in Southern California.

Inside this issue:

Santa Fe Science Olympiad Team	2
Spelling Bee Winner	2
The Power of Play	3
Diversity Day	3
Sue Williams Bids Farewell	4

Featured in this newsletter:

•Santa Fe Middle School

Articles contributed by:

Principal Ron Letourneau

•Canyon Early Learning Center

Articles contributed by:

Principal Suzanne Heck

Science Olympiad Competes at Occidental College

On a cool, wet and windy day, the Santa Fe Science Olympiad team took their talents to Occidental College to compete with other teams from the surrounding areas. At the end of the competition, the team had medaled in four different events, finishing 12th overall in a pool of 35 schools.

Taking 3rd place in 'Shock Value' were Cindy Wu-7th grade, and Erik Felizardo-8th grade. Lauren Allin-7th grade, and Emily O'Pray-7th grade, took 4th place in "Can't Judge a Powder". Fifth place finishes went to



Andrea Antezana-7th grade, Ethan Paz-6th grade, and Ares Torres-7th grade, for "Experimental Design".

Ethan Paz-6th grade, and Brenden Yee-6th grade received 5th place for "Meteorology".

This competition marked the fourth year that Santa Fe has been represented in the Los Angeles County Science Olympiad.

We are pleased and proud that our students have chosen to become serious and excited about their studies in science. They have represented us very well in the community, and we are proud of them.

Congratulations, Santa Fe Science Olympiad!

Yang Spells Her Way to LA County Bee

Current 8th grade student Dulce Yang gave it a valiant effort before eventually bowing out in the 11th round of the LA County-Scripps Regional Spelling Bee held at Walter Reed Middle School in North Hollywood on February 26th.

Dulce's journey began at the beginning of February when she competed with



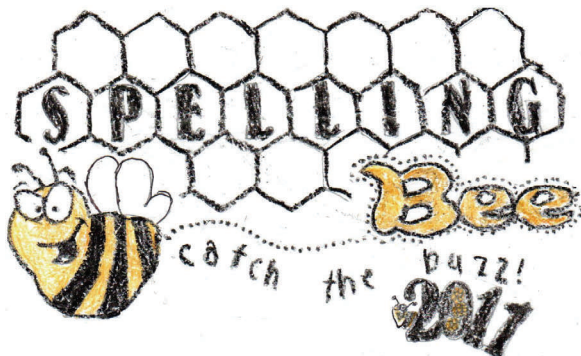
the rest of her classmates in her English Language Arts class. She won the class competition which propelled her into the school competition against other class winners from Santa Fe.

After enduring a great deal of competition from Al Villareal, Aira Villareal, Mona Wang and Jesus Galan, Dulce walked away

victorious, which allowed her the opportunity to compete at the county level.

Santa Fe is not only proud of Dulce's accomplishments in representing Santa Fe, but all the students that competed in the school spelling bee. It is also worth mentioning that this particular group of students at one time or another were identified as students learning English.

Monrovia Days Spelling Bee



The 3rd Annual Monrovia Days Spelling Bee will be held May 14, 2011, at the Community Center. The Bee will consist of the top six finishers, grades 6-12, from private and public schools in Monrovia. The top five finishers will receive an autographed book and medal, and all participants will receive a t-shirt and certificate of participation.

Pictured on the left: this year's Spelling Bee logo which was submitted by Abi Gladden, a 7th grade Mountain Park student.

The Power of Play



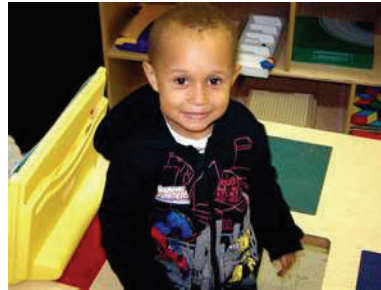
Young students at Canyon Early Learning Center and their parents are learning about the Power of Play.

CELC recently hosted two events encouraging parents to turn off the T.V., computer and video games and take time to play together.

On October 14th, CELC hosted a parent night titled, *Unplug and Play*. This event was hosted to encourage parents to come to school and explore playtime with their children. Parents were given a brief education about

early childhood brain development given by psychologist and early childhood development expert, Dr. Patricia Lakatos.

Then parents and their children were turned loose on the Family Learning Center to explore art, literacy and open ended builders



like Legos, blocks and magnets.

On December 7, CELC hosted another parent night, this time targeting fathers and male role models. *Pizza with the Poppas* was a huge success with over one hundred dads, uncles, brothers, step-fathers turning out

to munch on pizza and explore with art materials and builders.

CELC is committed to engaging parents in their children's school experience early on, hopefully fostering involvement and confidence in parents, as students move into their school age years.



Diversity Day



Students at Canyon Early Learning Center (CELC) learn about how "We are all the same, We are all Different" Nothing better illustrates this than CELC's Diversity Day Multicultural Fair.

At CELC's Diversity Day, parents and students were able to explore five different countries through food and age appropriate activities.

As part of the festivities, students built Egyptian pyramids from blocks. They created

Leaning Tower of Pasta (currently displayed in CELC lobby) and made doggies using Japanese origami techniques.

Students attending Diversity Day made rain sticks inspired by art from Peru and beautiful Mexican style paper flowers.

Students, parents, grandparents and staff dined on a wide variety of foods inspired by each country. Monrovia School District's Food Services provided hummus, corn, spaghetti, meatballs, taquitos and teriyaki chicken.

At CELC, we embrace teaching young children about the value of diversity and the unique qualities that make us individuals.

To learn more about how your child or grandchild can attend our diverse, quality pre-K program, contact our office at (626) 471-2001.



Sue Williams Bids Farewell

There is never an easy time to say goodbye, but when you feel it is the right time, it makes the decision much easier. Such is the case with long time teacher Sue Williams who is retiring at the completion of the 2010-11 school year.

Ms. Williams is finishing her 16th year at Santa Fe. Over the many years that she has been in education, Sue has touched thousands of lives in a very positive manner. To this day, Monrovia High School students make their way to Santa Fe to visit her; to just talk and share, which is a strong tribute to her devotion to students.



While at Santa Fe, Sue has taught English Language Arts at all three levels, including both Honors and Pre-AP, developed an intervention program for students that struggle

in various areas of ELA, and has been the art teacher the past 2 years.

Ms. Williams has a Master's Degree in ELD and put that to use in her earlier years at Santa Fe when she taught the ELD students. Sue was also instrumental in getting the award winning AVID program up and running at Santa Fe along with long time colleague and best friend Gail La Bau.

As you can see, Ms. Williams has been a vital and valued member of the Santa Fe staff for many years and her service and dedication to all her current and former students will be sorely missed in future years.



MUSD Governance team:

Ed Gililand

Board President

•

Clare Chesley

Vice President

•

Chris Rich

Clerk

•

Alex Zucco

Member

•

Bryan Wong

Member

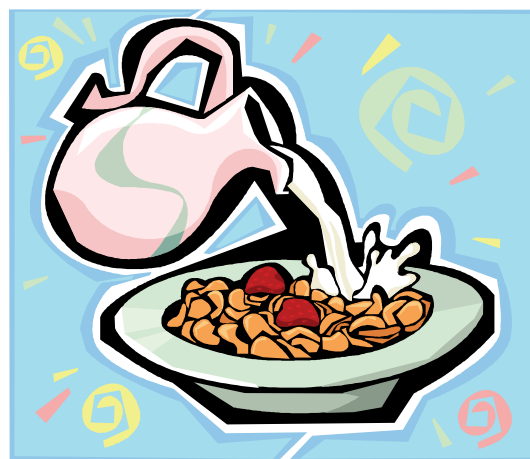
•

Linda Wagner

Superintendent

Healthy Behaviors Parent Education Evening

TUESDAY MARCH 29, 2011
6:30 PM
PLYMOUTH ELEMENTARY CAFETERIA



FEATURED TOPICS AND ACTIVITIES



- Eating your way through the food guide pyramid
- See how easy it is to get in a quick workout in only 10 to 15 minutes!
- Dance your way to a healthy heart. Join us for a jig that will get your heart pumping
- Learn the facts about drinking water vs. soda and the benefits of eating a healthy breakfast
- Taste testing and tips on how to eat healthy on a budget
- Local organizations will be there to showcase their services to help you develop healthy behaviors for a more fit and healthy you!
- Turn in your “punch card” after visiting all booths and be eligible for raffle prizes throughout the evening
- Students are welcome to attend this special evening with their parents



Family Order Form

Created: 4/27/2010 10:56:00 PM

Monrovia School Foundation

Orders must be received in the school office by 8 a.m. on Friday. Make checks to Monrovia Schools Foundation and include phone number on the form. Scrip can be picked up in the office on the following Friday. Thanks for your support of our schools!

Name	Customer #
Check #	Order Date

Product	%	Qty	Total
Albertsons \$100.00	4%		\$
Albertsons \$25.00	4%		\$
Amazon.com \$25.00	4%		\$
AMC Single Admit \$9.50	16%		\$
AMC Theatres \$25.00	7.00%		\$
Applebee's \$25.00	**10%		\$
Applebee's \$50.00	**10%		\$
Arco \$100.00	2%		\$
Arco \$50.00	2%		\$
Baja Fresh \$25.00	7.00%		\$
Barnes & Noble Booksellers \$10.00	9%		\$
Barnes & Noble Booksellers \$20.00	9%		\$
Baskin Robbins \$2.00	9%		\$
Best Buy \$100.00	3%		\$
Best Buy \$25.00	3%		\$
Big 5 Sporting Goods \$25.00	8%		\$
Blockbuster \$10.00	7.00%		\$
Borders \$10.00	9%		\$
Borders \$25.00	9%		\$
Burger King \$10.00	4%		\$
California Pizza Kitchen \$10.00	4%		\$
Carl's Jr. \$10.00	9%		\$
Cheesecake Factory \$25.00	5%		\$
Chevron \$100.00	1.50%		\$
Chevron \$50.00	1.50%		\$
Chili's Grill & Bar \$25.00	11%		\$
Chuck E. Cheese \$10.00	8%		\$
Claim Jumper Restaurants \$25.00	8%		\$
Coffee Bean & Tea Leaf \$25.00	9%		\$
CVS/pharmacy \$100.00	6%		\$

CVS/pharmacy \$25.00	6%		\$
Dave & Busters \$25.00	13%		\$
Dick's Sporting Goods \$25.00	8%		\$
Disney \$100.00	2%		\$
Disney \$25.00	2%		\$
Domino's Pizza \$10.00	8%		\$
Game Stop \$25.00	3%		\$
Gap \$25.00	9%		\$
HairMasters \$25.00	8%		\$
Henry's Farmers Market \$25.00	3%		\$
Henry's Farmers Market \$50.00	3%		\$
Home Depot \$100.00	**5%		\$
Home Depot \$25.00	**5%		\$
iTunes@ \$15.00	5%		\$
iTunes@ \$25.00	5%		\$
J. Crew \$25.00	13%		\$
Kohl's Department Store \$100.00	4%		\$
Kohl's Department Store \$25.00	4%		\$
L.L. Bean \$25.00	15%		\$
Lands' End \$25.00	**18%		\$
Little Caesar's Pizza \$20.00	8%		\$
Lowe's Home Improvement \$100.00	4%		\$
Lowe's Home Improvement \$25.00	4%		\$
Macy's \$25.00	10%		\$
Mimis Cafe \$25.00	8%		\$
Mobil \$50.00	1.50%		\$
Office Depot \$25.00	4%		\$
Old Navy \$25.00	9%		\$
Olive Garden \$25.00	9%		\$
Pavilions \$100.00	4%		\$
Pavilions \$25.00	4%		\$

Payless Shoes \$20.00	13%		\$
Pep Boys \$20.00	4%		\$
PetSmart \$25.00	4%		\$
Pinkberry \$10.00	5%		\$
Pizza Hut \$10.00	8%		\$
Rite Aid \$25.00	4%		\$
Sam's Club \$100.00	2%		\$
Sam's Club \$25.00	2%		\$
See's Candies \$16.10	23%		\$
Shell \$100.00	2.50%		\$
Shell \$25.00	2.50%		\$
Shell \$50.00	2.50%		\$
Smart & Final \$100.00	3%		\$
Smart & Final \$25.00	3%		\$
Smart & Final \$50.00	3%		\$
Sports Authority \$25.00	8%		\$
Staples \$100.00	5%		\$
Staples \$25.00	5%		\$
Starbucks \$10.00	7.00%		\$
Starbucks \$25.00	7.00%		\$
Subway \$10.00	3%		\$
Supercuts \$25.00	8%		\$
Toys-R-Us \$20.00	1.50%		\$
Walgreens \$25.00	6%		\$
Walmart \$100.00	2%		\$
Walmart \$25.00	2%		\$
Wendy's \$10.00	4%		\$

Product	%	Qty	Total
			\$
			\$
			\$
			\$
			\$
			\$

Make Checks Payable To: *Monrovia Schools Foundation*

Total Due All Columns:

\$

****Limited time bonus offer. Participating retailers and products are subject to change without notice.**



FACT SHEET

Monrovia Unified School District
325 E. Huntington Dr.
Monrovia, CA 91016
(626) 471-2000
www.monroviaschools.net

VISION

- ❖ DISTINGUISHED SCHOOLS
- ❖ ACHIEVING STUDENTS
- ❖ GRADUATES PREPARED FOR LIFE

Mission Statement

By working actively & cooperatively as students, staff, parents, & community, the Monrovia Unified School District is committed to devoting its energy, resources, and support to provide:

- ★ Academically rigorous educational programs that foster the maximum development of each student's potential;
- ★ A challenging, safe, orderly, & positive learning environment;
- ★ Quality staff and ★ Quality service

BOARD OF EDUCATION

Clare R. Chesley
 Ed Gililand
 Chris Rich
 Bryan J. Wong
 Alexandra "Alex" Zucco

DISTRICT ADMINISTRATION

Linda Wagner, Ed.D. – *Superintendent of Schools*
 Debby Collins, Ed.D. – *Deputy Superintendent*
 Julie A. Vitale, Ph.D. – *Assistant Superintendent, Educational Services*
 Connie Wu, CPA – *Chief Business Officer*
 Jason Buchanan – *Chief Technology Officer*

NUMBER OF SCHOOLS

Elementary K-5	5
Middle Schools	2
High School	1
Continuation High School	1
Alternative School	1
Community Day School	1
Early Learning Center (preschool/ child development center)	1
Community Adult School	1

CURRENT ENROLLMENT

Elementary	2,633
Middle	1,351
High School	1,737
Continuation High School	129
Alternative School	139
Community Day School	Varies
Total K-12 Enrollment	5,989
Adult Education	3,000

ETHNICITY OF STUDENTS

Hispanic	57.8%
White (not Hispanic)	25.2%
African American	8.4%
Asian	3.1%
Filipino	2.6%
American Indian/Alaskan Nat.	0.6%
Pacific Islander	0.4%
Multiple/No Response	1.9%

Academic Performance Index (API) Six Year Growth - 2005-2010

School	2005	2006	2007	2008	2009	2010	Growth
Bradoaks Elem.	756	773	780	819	844	818	-26
Mayflower Elem.	841	850	840	853	863	865	2
Monroe Elem.	764	782	762	790	825	829	5
Plymouth Elem.	813	803	799	815	810	782	-28
Wild Rose Elem.	761	784	778	815	795	822	27
Clifton Middle	747	773	796	830	846	843	2
Santa Fe Middle	727	767	763	792	793	814	24
Monrovia High	685	683	717	719	747	766	18
Mountain Park	535	524	579	556	624	728	104
Canyon Oaks	464	512	510	534	598	607	9
MUSD	732	744	754	774	790	797	8

AYP Results for English Language Arts Percent Proficient: 2005-2010

School	2005	2006	2007	2008	2009	2010
State	41.9	44.8	45.5	48.5	52.4	54.0
MUSD	44.9	50.4	50.4	56	59.4	59.7
Difference	3.0	5.6	4.9	7.5	7.0	5.7

AYP Results for Math Percent Proficient: 2005-2010

School	2005	2006	2007	2008	2009	2010
State	45	48	48.5	51.2	54.5	56.4
MUSD	51.4	55.4	55.5	59.9	62.9	62.5
Difference	6.4	7.4	7	8.7	8.4	6.1

2010-11 BUDGET

REVENUE		PROJECTED EXPENDITURES		Per Pupil Expense \$8,180
Federal	14%	Certificated Salaries	\$22,893,165	
State	78%	Classified Salaries	8,827,698	
Local	8%	Employee Benefits	8,062,824	
Total Budget	\$48,679,316	Books & Supplies	2,463,880	
		Contracted/Operating Expenses	5,704,092	
		Sites, Building & Equipment	377,448	
		Other Costs	350,209	

ELEMENTARY SCHOOLS

BRADOAKS ELEMENTARY 930 E. Lemon Ave., Monrovia 91016 (626) 471-2100 Valerie Bires, Principal	K-5
CANYON EARLY LEARNING CENTER State Preschool/Child Development Ctr. 1000 S. Canyon Blvd., Monrovia 91016 (626) 471-2001 Suzanne Heck, Principal	Pre-K
MAYFLOWER ELEMENTARY 210 N. Mayflower Ave., Monrovia 91016 (626) 471-2200 Kirk McGinnis, Principal	K-5
MONROE ELEMENTARY 402 W. Colorado Blvd., Monrovia 91016 (626) 471-2300 Cindy Lathrop, Principal	K-5
PLYMOUTH ELEMENTARY (Year Round) 1300 Boley St., Monrovia 91016 (626) 471-2400 Michael Hoon, Principal	K-5
WILD ROSE ELEMENTARY 232 Jasmine Ave., Monrovia 91016 (626) 471-2500 Stacy Ayers, Principal	K-5

MIDDLE SCHOOLS

CLIFTON MIDDLE 226 S. Ivy Ave., Monrovia 91016 (626) 471-2600 Traci Gholar, Principal	Gr. 6-8
SANTA FE MIDDLE 148 W. Duarte Rd., Monrovia 91016 (626) 471-2700 Ron Letourneau, Principal	Gr. 6-8

HIGH SCHOOLS

MONROVIA HIGH 845 W. Colorado Blvd., Monrovia 91016 (626) 471-2800 Darwin Jackson, Principal	Gr. 9-12
---	-----------------

ALTERNATIVE SCHOOLS AND ADULT SCHOOL

CANYON OAKS HIGH (Gr. 9-12, Continuation) 930 Royal Oaks Dr., Monrovia 91016 (626) 471-3000 Flint Fertig, Director
MOUNTAIN PARK SCHOOL (K-12, Alternative) 950 S. Mountain Ave., Monrovia 91016 (626) 471-3029 Flint Fertig, Director
COMMUNITY DAY SCHOOL "QUEST ACADEMY" (626) 471-3029 (Gr. 7-12, Alternative) Flint Fertig, Dir.
MONROVIA COMMUNITY ADULT SCHOOL 920 S. Mountain Ave., Monrovia 91016 (626) 471-3065 Flint Fertig, Director

2010-11 SCHOOL CALENDAR (ex. Plymouth)

First Day of School	August 30, 2010
Labor Day	September 6, 2010
Veteran's Day	November 11, 2010
Thanksgiving Recess	November 22 – 26, 2010
Winter Recess	December 20 – 31, 2010
Martin Luther King Jr. Day	January 17, 2011
Lincoln's Birthday	February 11, 2011
Presidents' Day	February 21, 2011
Cesar Chavez Day	April 1, 2011
Spring Break	April 11 – 15, 2011
Memorial Day	May 30, 2011
Last Day of School	June 10, 2011

STATE AND NATIONAL AWARDS FOR PROGRAM EXCELLENCE

MUSD Nutrition Program honored as #1 in the state for 2008. MUSD received "District of the Year" recognition for the Los Angeles County Region, winning the Spotlight Award from the Governor's Council on Physical Fitness and Sports Award. Bradoaks, Monroe, Plymouth and Wild Rose Elementary schools have received the National Achieving Schools Award for the extraordinary academic performance of their students.

Thirteen prestigious Golden Bell Awards for model programs and services

Campus Safety Program	Pro-Active Tutoring program (P.A.T.)
AVID College-Bound Program	Nutrition Program
Village After-School Program	Canyon Early Learning Center Pre-K Program
Monrovia Reads Program	College Bound Culture
MHS Video-Tech Program	MEO Games
Outdoor Education	Youth Employment Service (Y.E.S.) Program
Responsive Classroom Program	

Six California Distinguished Schools

Bradoaks Elementary School	Mayflower Elementary School
Monroe Elementary School	Wild Rose Elementary School
Clifton Middle School	Santa Fe Middle School

Six schools with API scores exceeding the 800 state target

Bradoaks Elementary School	Mayflower Elementary School
Monroe Elementary School	Wild Rose Elementary School
Clifton Middle School	Santa Fe Middle School