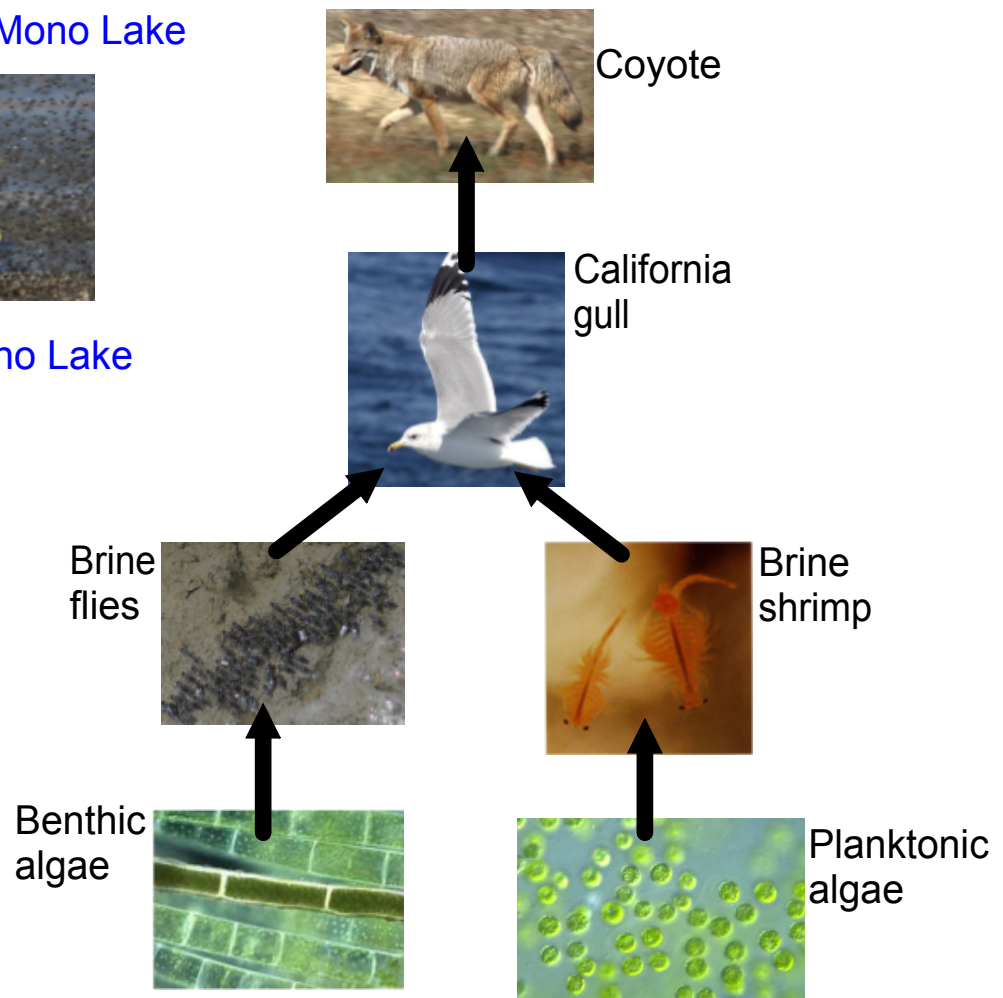


Food chains at Mono Lake

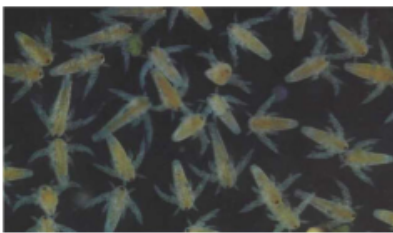


Part of the Mono Lake food web.

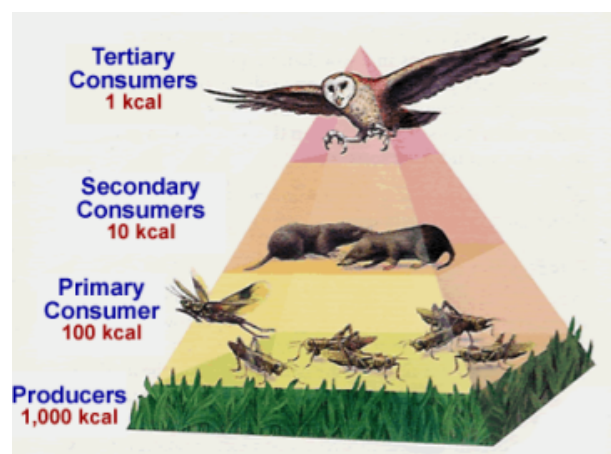
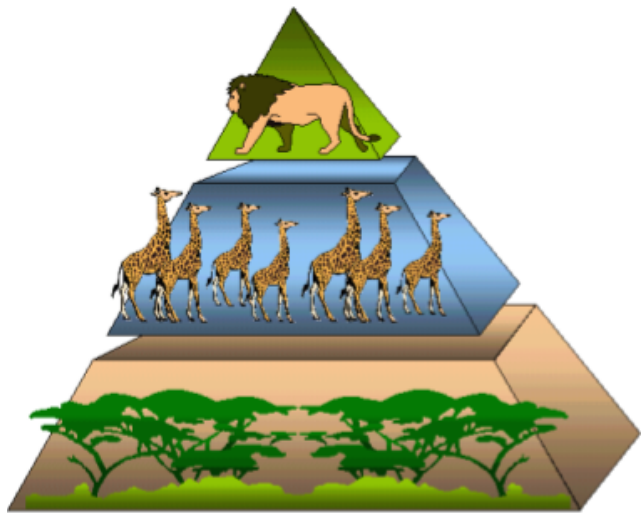


Biomass

How much mass there is of a particular living organism in a certain area.

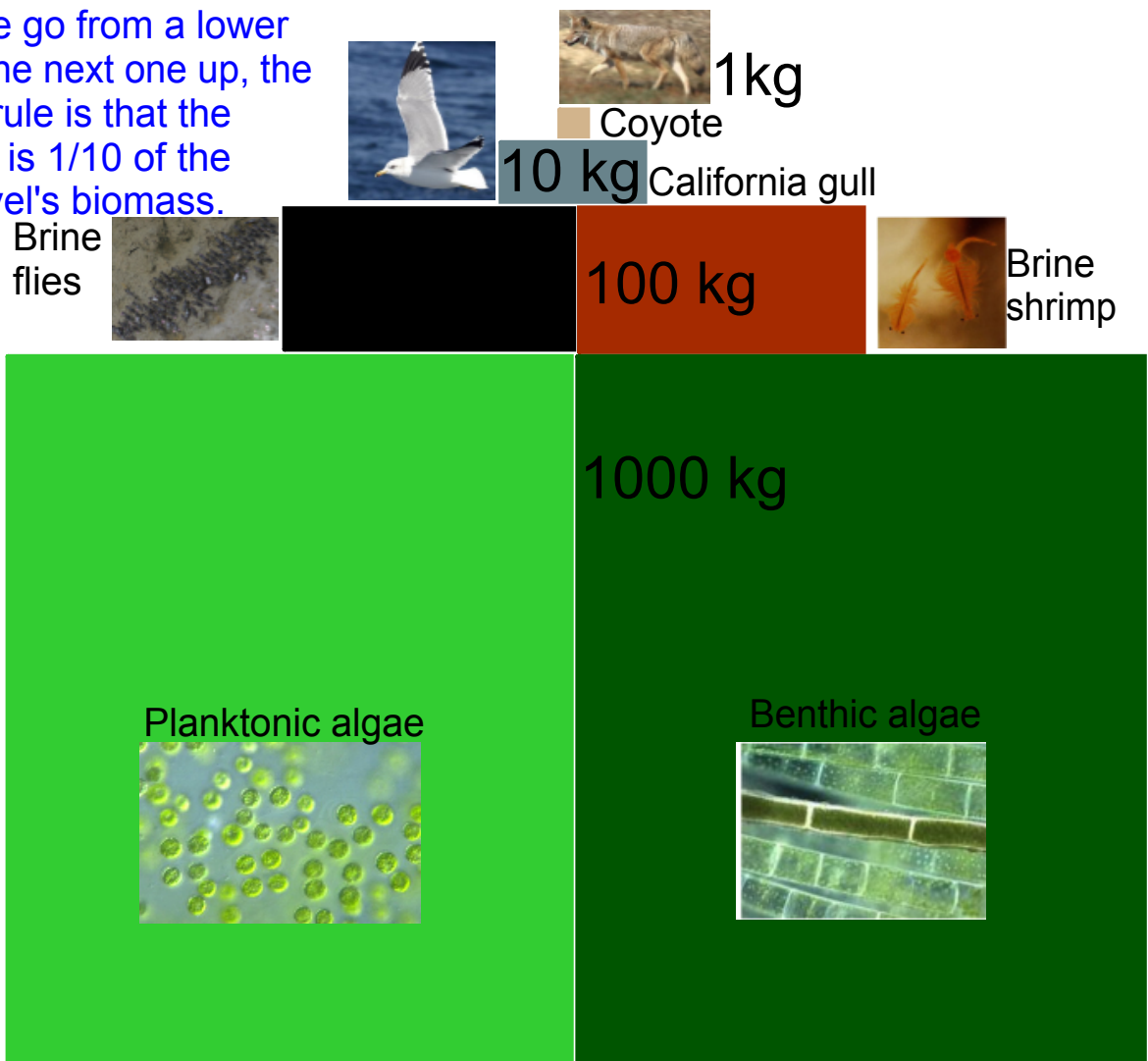


Energy Pyramid



In general the plants have the most biomass in an ecosystem followed by the herbivores. The carnivores have the least biomass.

When we go from a lower level to the next one up, the general rule is that the biomass is 1/10 of the lower level's biomass.



How energy is used

Movement



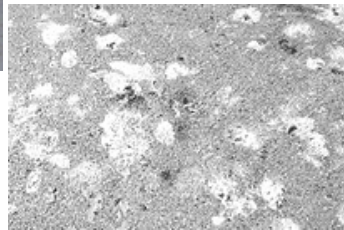
Growth and Reproduction



Maintenance



Waste



How energy is lost from the ecosystem

Heat

This decrease in biomass is due to the biomass being used as food. Most of the food is used for energy to make all of the above list of activities happen for an organism. Very little of the biomass goes into growth and reproduction. Most of the food is converted into energy.

This shows the change in biomass from one level to another with the energy leaving the system as it is used for different activities.

