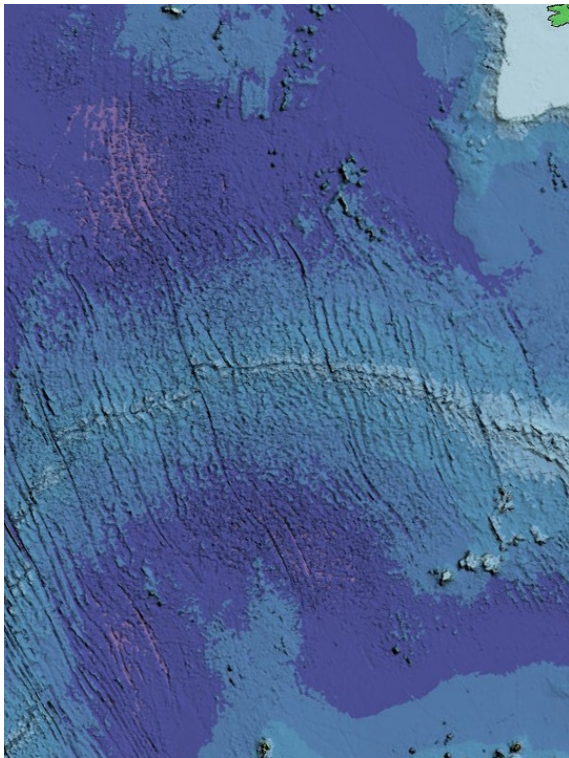
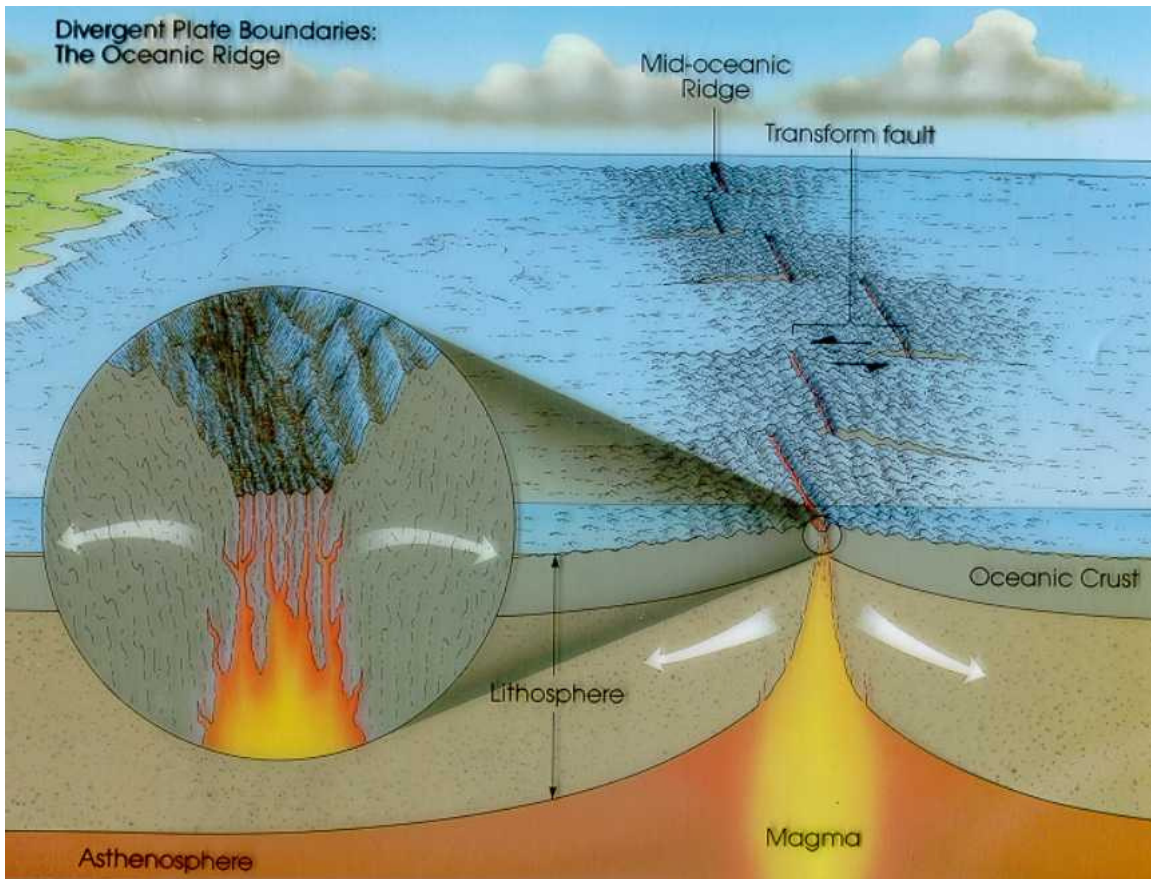


From rift valley to linear sea to mid-ocean ridge with sea floor spreading



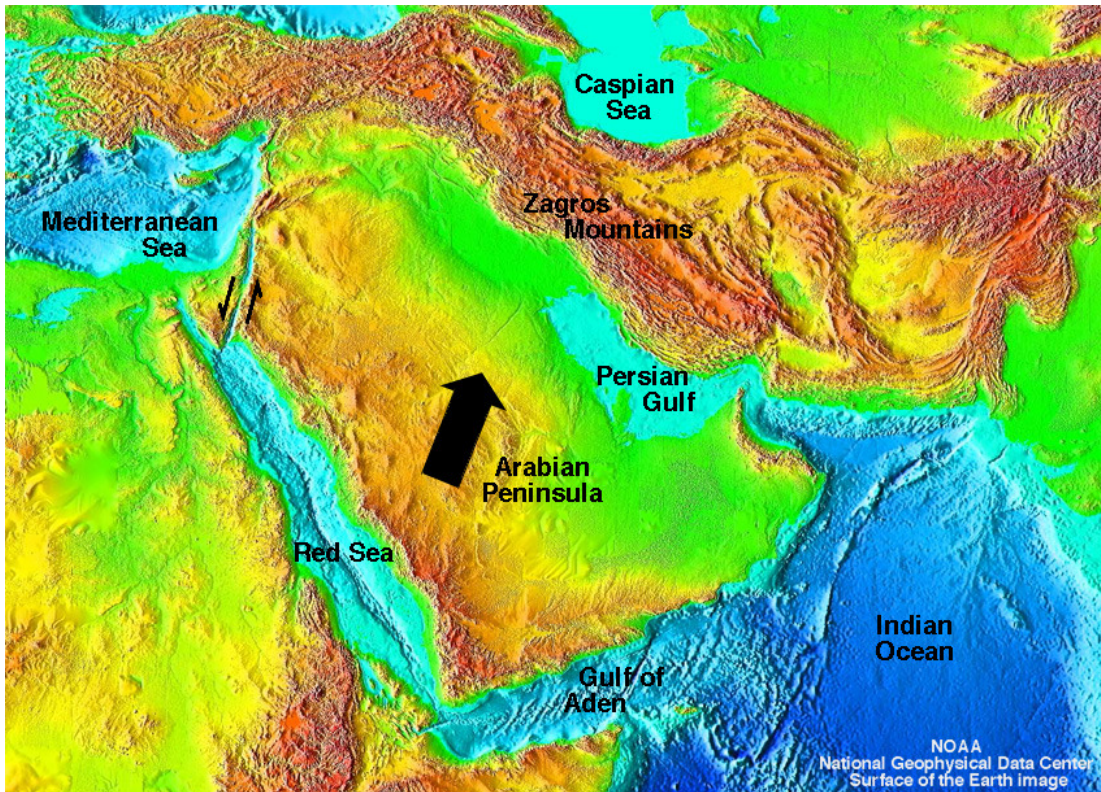
The mid-ocean ridge.



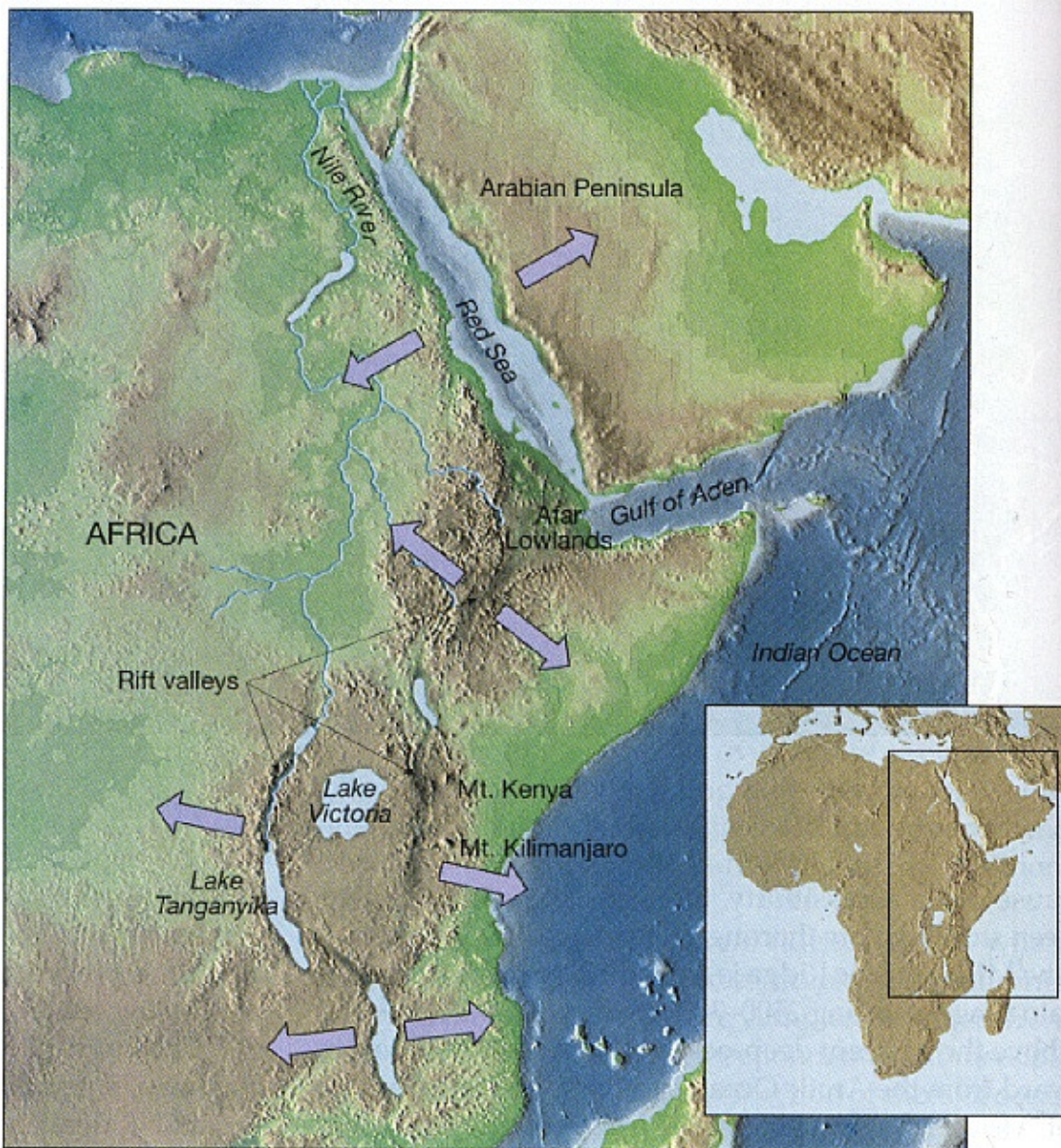
Actual Rift Valley on the center of the mid-ocean ridge



Views from space of the Arabian Plate, the Red Sea and the Gulf of Aden



Brand new sea floor spreading in the Red Sea from a long ago Rift Valley. The Gulf of Aden is an older sea floor spreading boundary.



Eastern Africa showing Rift Valleys with the newest section of Sea Floor Spreading in the Red Sea and slightly older Sea Floor Spreading in the Gulf of Aden. All the steps in one area!!