



The San Andreas Fault just after the 1906 San Francisco earthquake near Olema





The San Andreas fault in southern California. These three are in the Carizzo Plain.

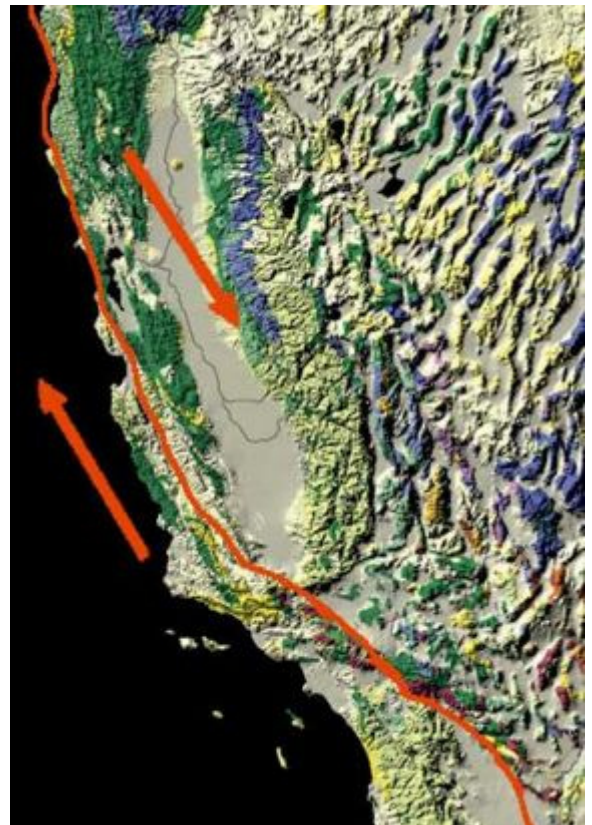


Two transform faults meeting in Southern California from space.



The San Andreas in Southern California

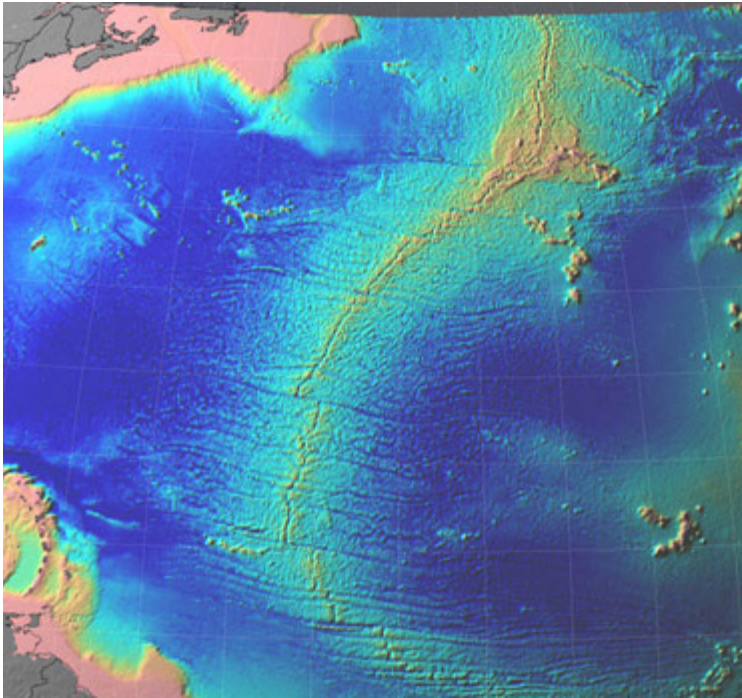




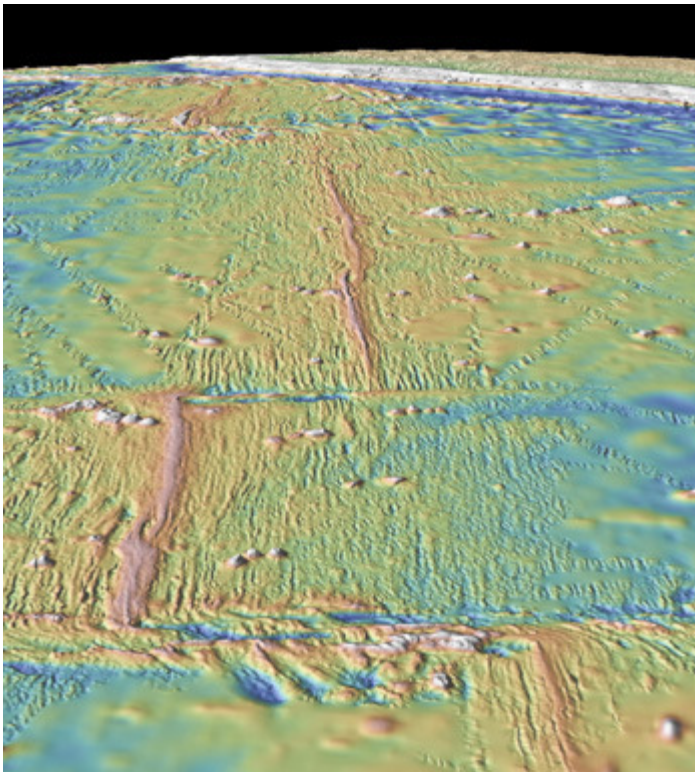
The entire length of the San Andreas in California



More of the San Andreas in the Bay Area - the transform fault lies under the Crystal Springs and San Andreas Reservoirs.

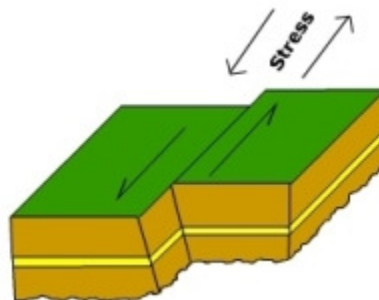
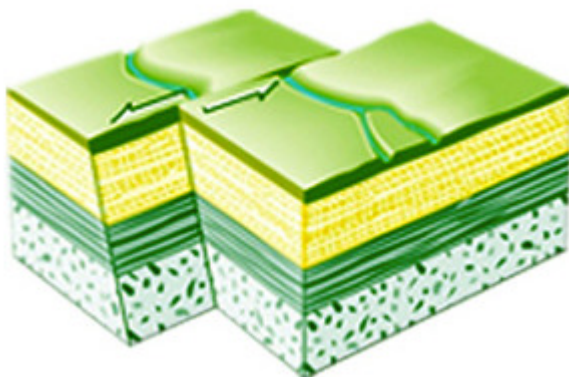
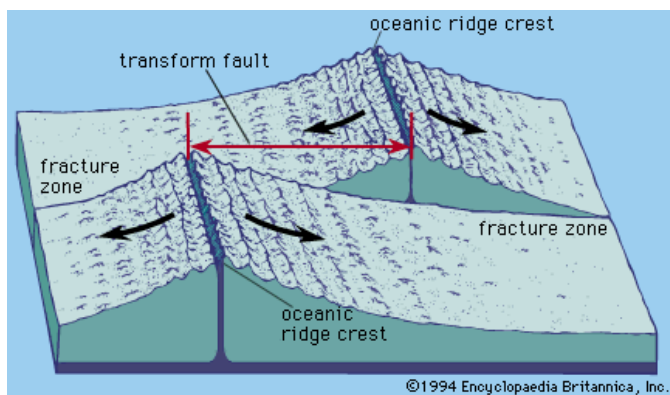
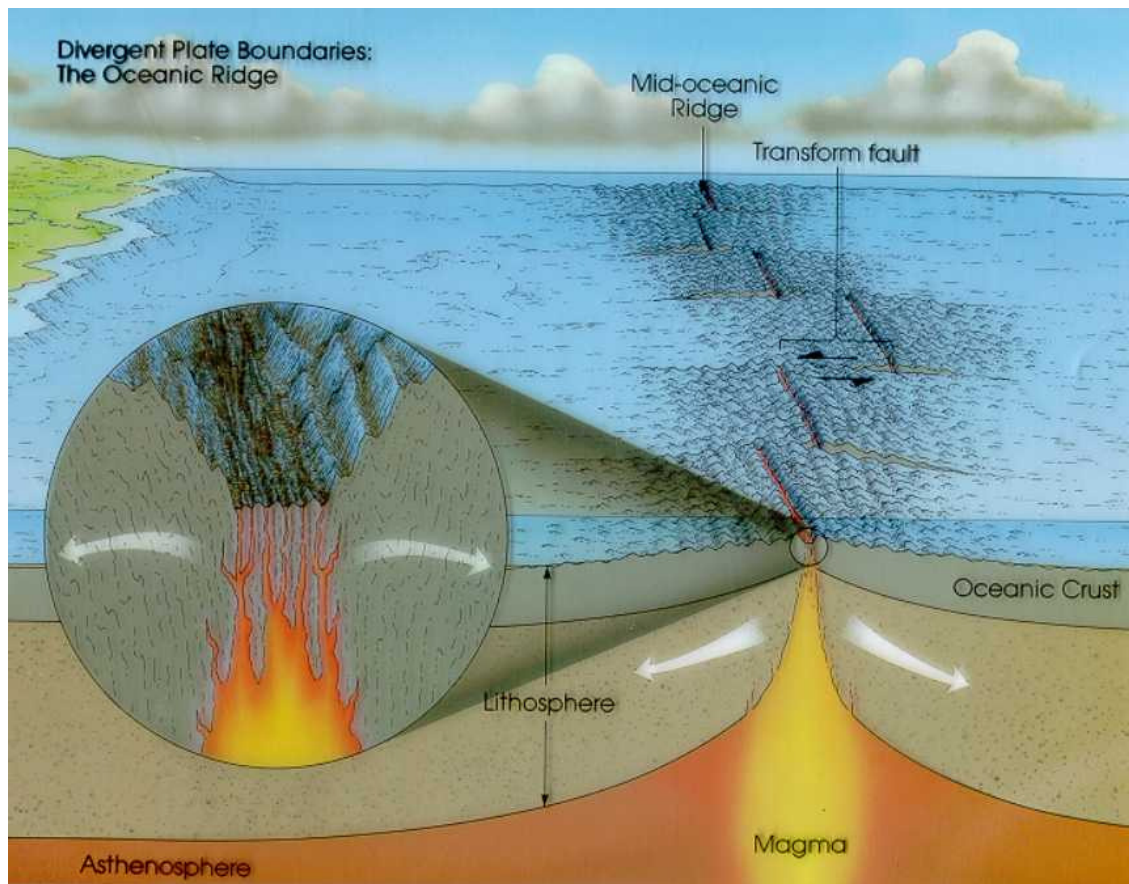


Transform faults along the mid-ocean ridge on the ocean floor. The transform faults cross the mid-ocean ridge and cause the mid-ocean ridge to not be in a continuous line.



Up close, mid-ocean ridge is pale pink. Transform faults run across the mid-ocean ridge.





Transform fault diagrams and models