

# Laboratory Equipment

## PART 3

By: Chris Bodolus

# 51. Microhematocrit Centrifuge



An instrument used to determine the ratio of packed red blood cell volume to whole blood volume.

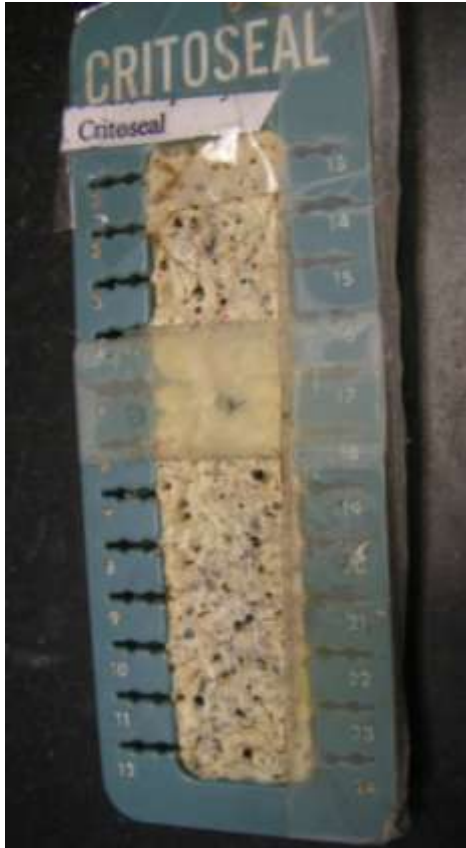
## 52. Micro-capillary Reader

Small instrument used to read capillary tubes.



## 53. Critoseal

Seals capillary tubes  
without heat and very  
quickly.



## 54. Plastic Container With Lid



Used to store blood  
mixed with saline.

# 55. Lancet



Used to draw blood  
from the finger for  
tests.

# 56. RPR Test Card

Test card used for the serological detection of syphilis.



# 57. RPR Dispensing Bottle (with cardiolipin antigen suspension)



Dispensing needles  
used in conjunction  
with RPR test cards.



## 58. Rotator

Device with platform  
used to rotate up to  
four standard test  
cards.



# 59. Timer



Device used to accurately time periods for when samples must be rotated or otherwise.

# 60. Disposable Card

Disposable, single-use  
RPR test card.



# 61. Dispenstir (Dispensing / Spreading Pipette)

Stick used with RPR cards to dispense and spread antigen emulsion and / or buffered saline solutions; used for serological detection of syphilis.



## 62. Stirring Rods

Glass rods used to stir solutions.



# 63. Hot Plate

Equipment used to heat solutions without an open flame.



# 64. Safety Gloves



Gloves used when harm can come to the hands.

# 65. Autoclave

Sterilizes equipments  
with steam.





## 66. Slant Rack



Rack that is slanted to use gravity to your advantage.

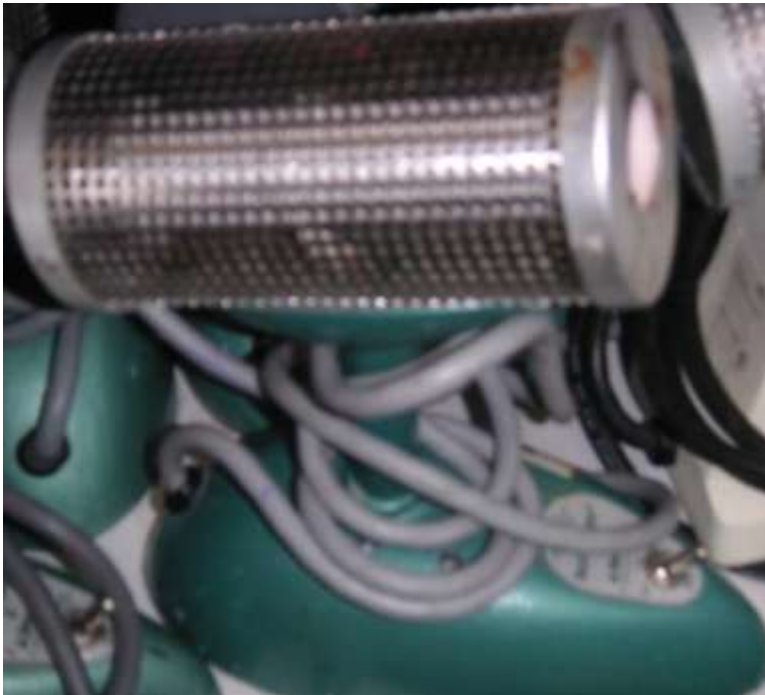
# 67. Wax Pencil

Pencil used to mark glassware.



## 68. Bacti-Cinerator

Sterilizes  
microorganisms with  
infrared heat.



# 69. Dropper Bottle



Bottle with dropper  
attached to cap used  
to dispense small  
amounts of liquid.

# 70. Staining Rack

Tray used for staining specimens.



# 71. Wire Needle

Needle used to transfer microorganisms.



## 72. Sterile Swab

Swab free from living organisms used to transfer microbes to another surface.



# 73. WBC Differential Lab Counter

NBC differential lab counter, used to count WBCs.





# 74. Vacutainer Holder



Vacutainer, cylinder shaped, holder that accepts a vacutainer tube and needle.

# 75. Fixed Volume Pipette

Instrument used for  
pipetting a single  
volume.

