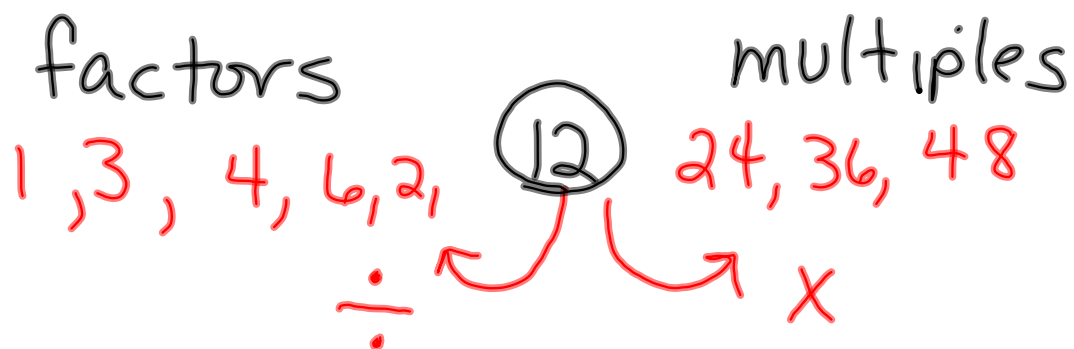


10/25 5.4 Least Common Multiples

A multiple shared by 2 or more
#s is a common multiple.



Common multiples of 25 & 30:

	1	2	3	4	5	...
25:	25	50	75	100	125	150
30:	30	60	90	120	150	180

- ① List the multiples by multiplying my original # by 1, 2, 3, 4, 5, 6, etc...
- ② Find the multiples they have in common.

p. 235 #s 1-4: 2 min.

$$\begin{array}{r} 2 | 2, 4, \cancel{6}, 8 \\ \hline 3 | 3, \cancel{6}, 9, 12 \end{array}$$

① 6, 12

② 15, 30

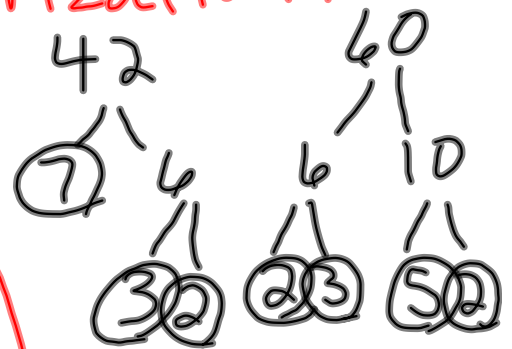
③ 40, 80

④ 18, 36

Using Prime Factorization:

$$42 = 2, 3, 7$$

$$60 = 2, 2, 3, 5$$



$$2 \times 3 \times 2 \times 5 \times 7 = 420 \text{ cm}$$

In Class:

p. 237 #s 8-11 &
17-20

HW: WS p. 65

#s 1-21 odd

