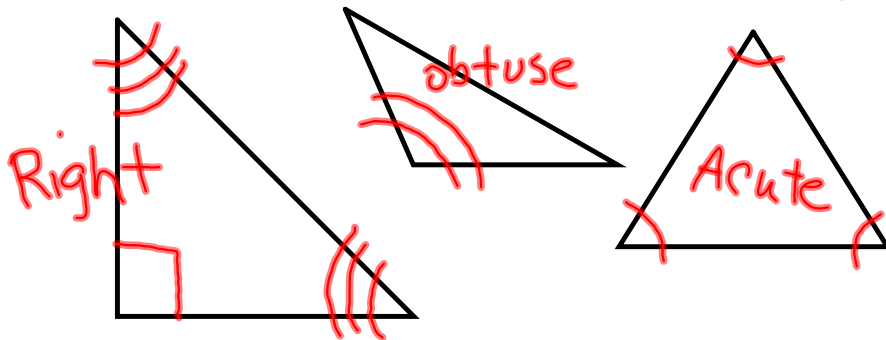


3/13/12 9.4 Classifying Triangles

2 categories of Δ classification:

① By ANGLES:

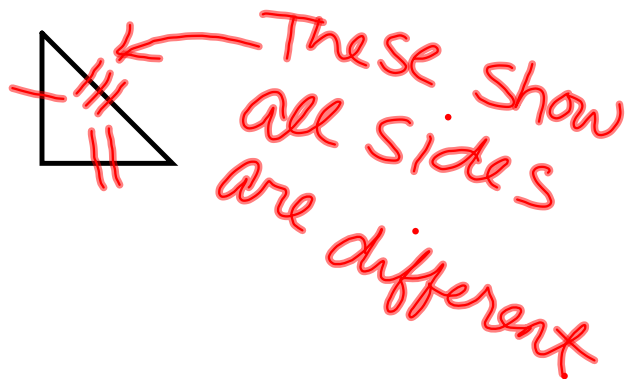
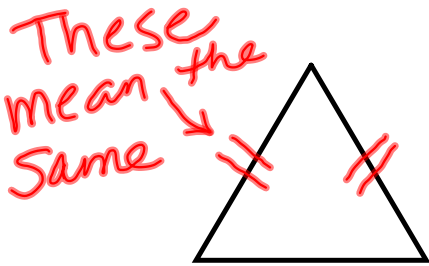
- ACUTE TRIANGLE = 3 acute angles
- RIGHT TRIANGLE = 1 right angle
- OBTUSE TRIANGLE = 1 obtuse angle



② By SIDES

- Equilateral Triangle = 3 sides of = length
- Isosceles Triangle = At least 2 sides of the same length

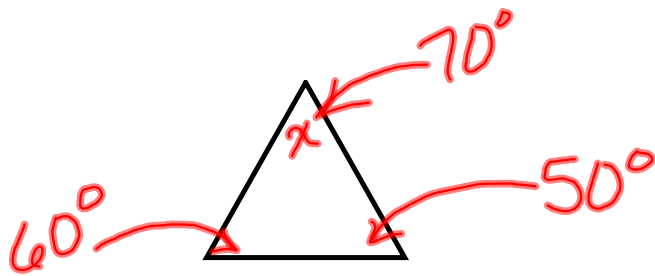
- Scalene Triangle = 3 sides of different lengths



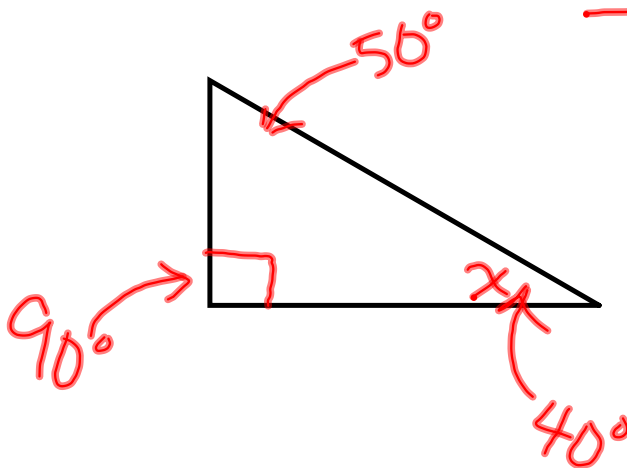
P. 436 Ex 1

P. 437 Ex 2

* The **SUM** of the
angle measures of a
 \triangle is 180° .



$$\begin{array}{r} 60 \\ +50 \\ \hline 110 \end{array} \quad \begin{array}{r} 180 \\ -110 \\ \hline 70^\circ \end{array}$$



$$\begin{array}{r} 90 \\ +50 \\ \hline 140 \end{array} \quad \begin{array}{r} 180 \\ -140 \\ \hline 40 \end{array}$$

In Class:

p. 438-439 #s 1-16,
20-28

HW: WS 9.4

