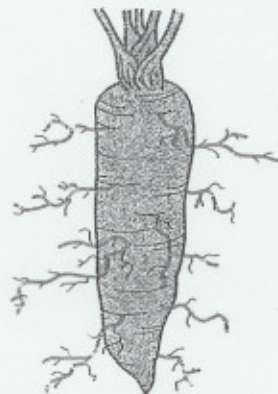


Fibrous
(grass)



Taproot
(carrot)

Label the Flower Parts

Read the definitions then label the diagram below.

Definitions

anther - the anther is the tip of a flower's stamen (the male reproductive organs of the plant) - it contains the pollen.

filament - the filament is the part of the flower that holds the anther (and part of the stamen, the male reproductive organs of the plant).

ovary - the ovary is a female reproductive organ in plants that produces ovules. It is at the base of the pistil.

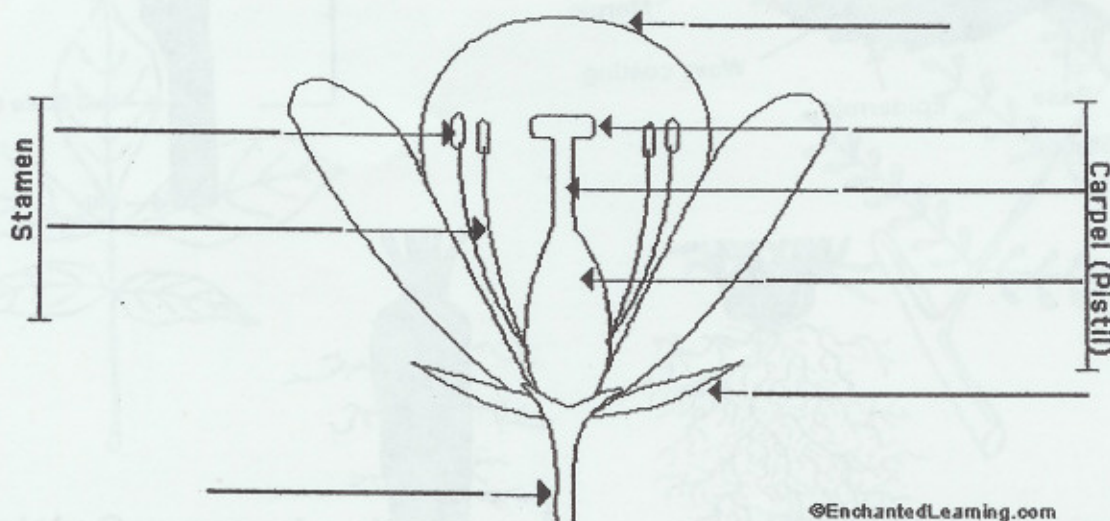
petal - a petal is one of the leafy structures that comprise a flower. Petals are often brightly-colored and have many different shapes.

sepal - the sepals are small leaves located directly under a flower - they are the outermost part of a flower.

stem (also called the peduncle) - the stem supports the plant.

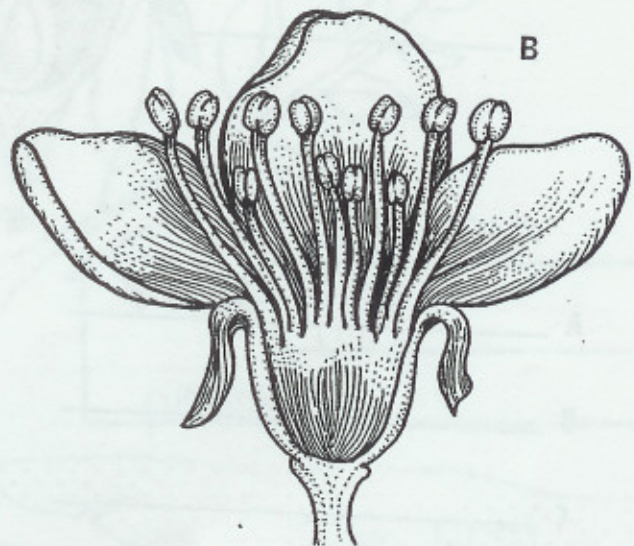
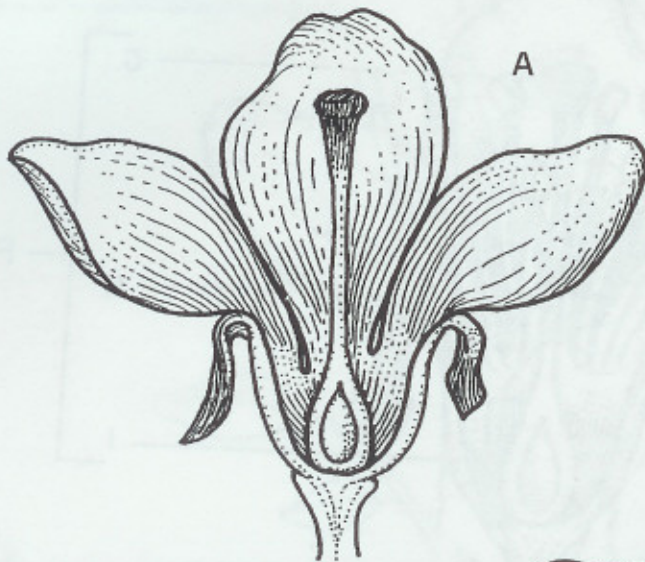
stigma - the stigma is uppermost part of the pistil, the female reproductive tissue of a flower. The stigma receives the male pollen grains during fertilization, when they travel through the style to the ovary.

style - the style is part of the pistil, the female reproductive tissue of a flower. The style is a long tube on top of the ovary, and below the stigma.



©EnchantedLearning.com

Female and Male Flowers



Which of these two flowers is capable of producing fruit and seed?
