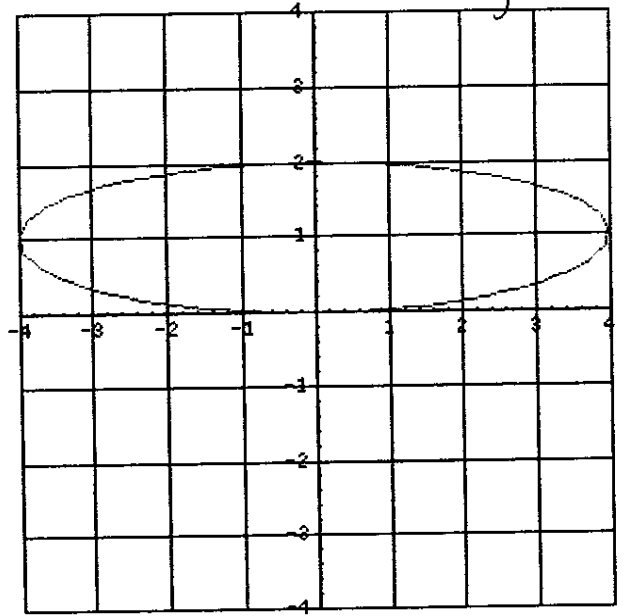


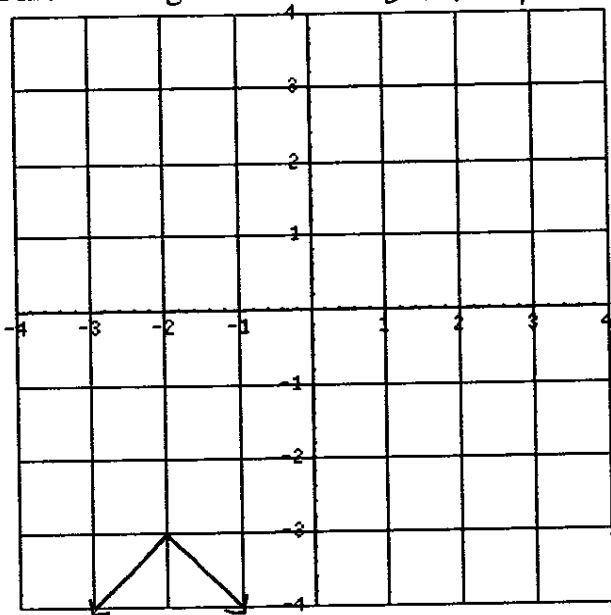
1) Find the range of: $y = \sqrt{x+1}$

Also find the domain.

2) Find the domain: Range:



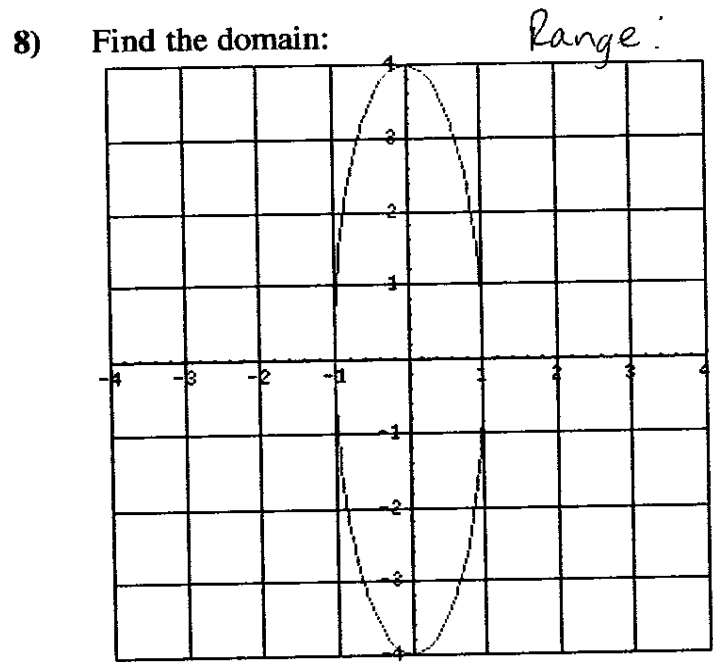
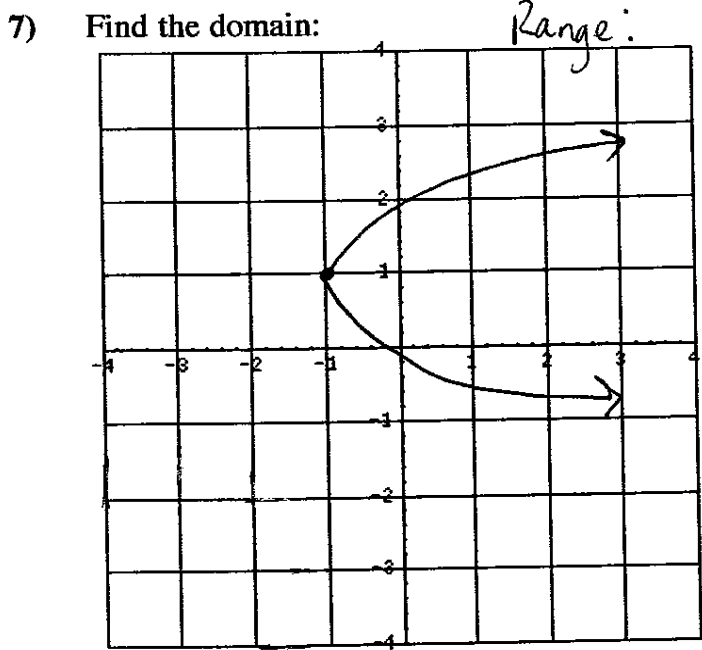
3) Find the range: Domain:



4) Find the range of: $y = (2)^x - 1$

5) Find the range of: $y = -3(x+2)^2 - 1$

6) Find the domain and range of $y = \frac{\sqrt{2x-5}}{x-5}$



9.) Find the domain and range of $y = \sqrt{x^2 - 4}$

10.) Find the domain of $y = \frac{x^2 + 1}{x^2 - 1}$