


LESSON 6.1  
 GRAPHING QUADRATIC EQUATIONS  
 ↓  
 PARABOLA



$$y = ax^2 + bx + c$$

↑  
MOST HAVE

Feb 17-1:18 PM

"a" - controls width  
 $a = 1$  BASIC PARABOLA  
 $0 < a < 1$  GETS WIDER  
 $a > 1$  GETS THINNER  
 $a < 0$  FLIPPED

STARTED AT ORIGIN  
 ALWAYS HAD SYMMETRY

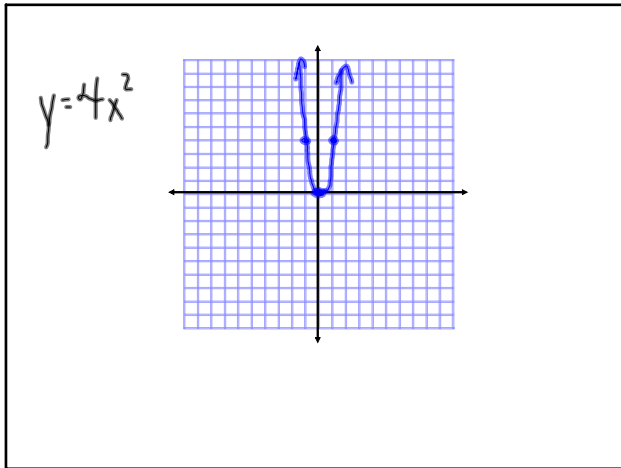
---

"c" ALWAYS Y-INTERCEPT

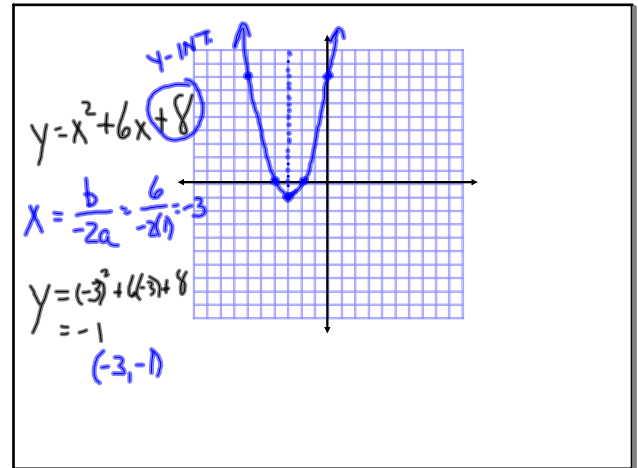
---

"b" CONTROLS THE POSITION OF THE VERTEX, IN CONJUNCTION WITH THE "a" VALUE  
 X-value of the vertex WILL BE  $\frac{b}{-2a}$

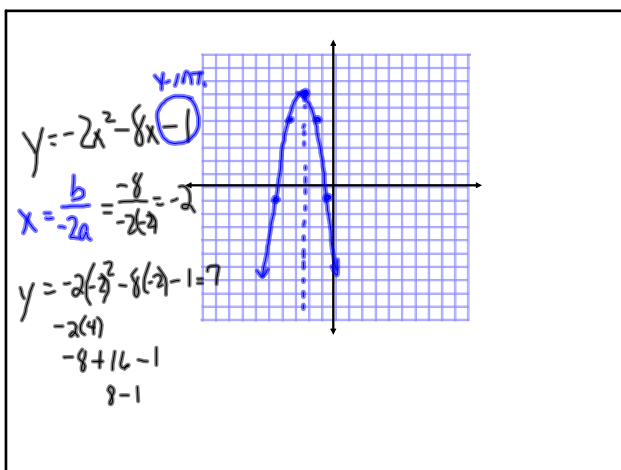
Feb 17-1:44 PM



Feb 18-1:23 PM



Feb 18-1:29 PM



Feb 18-1:41 PM

#4  
 p. 290 - 292  
 4, 5, 8, 14, 16,  
 19, 20, 25  
 (46, 47)

Feb 18-1:48 PM