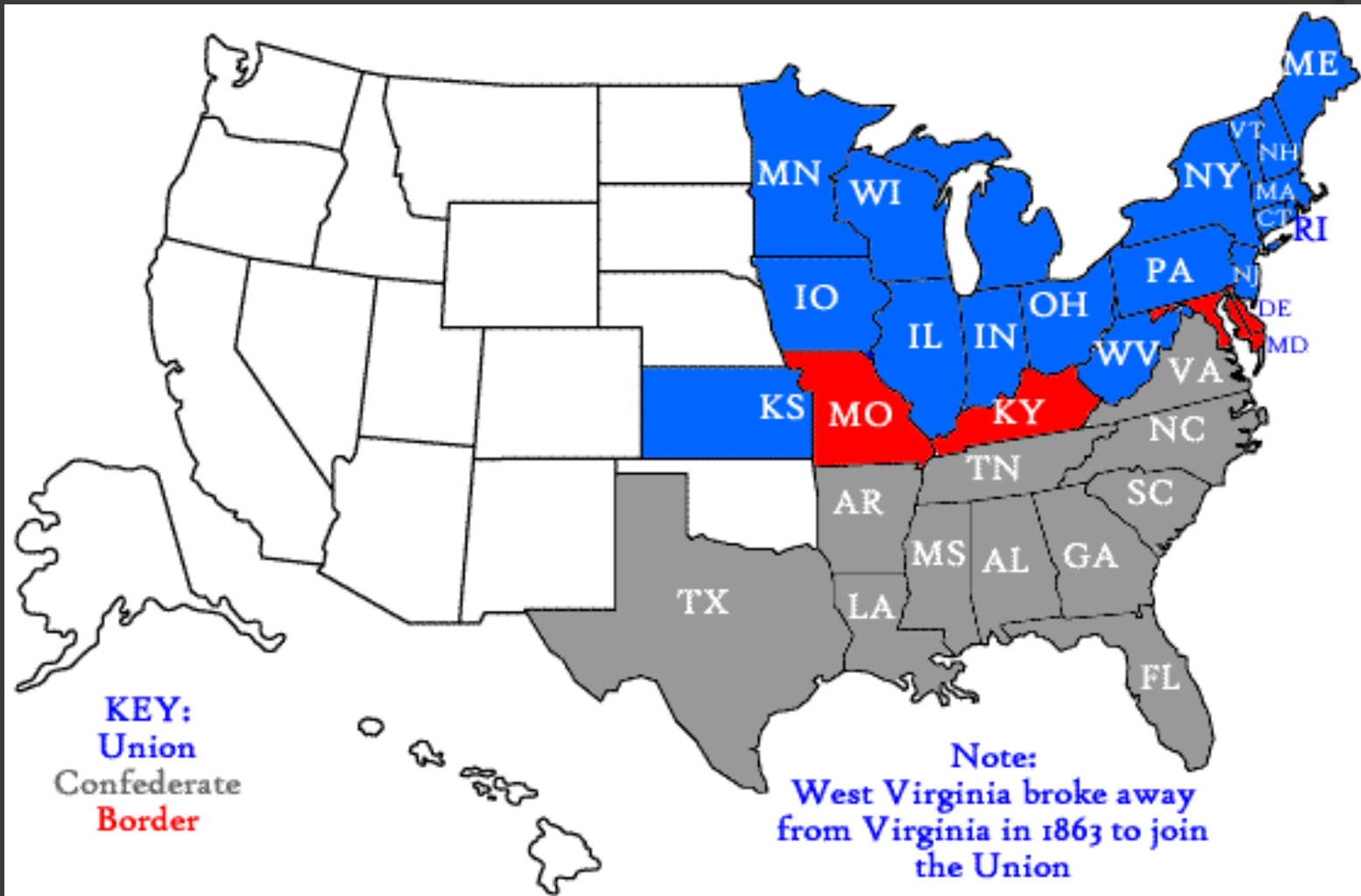


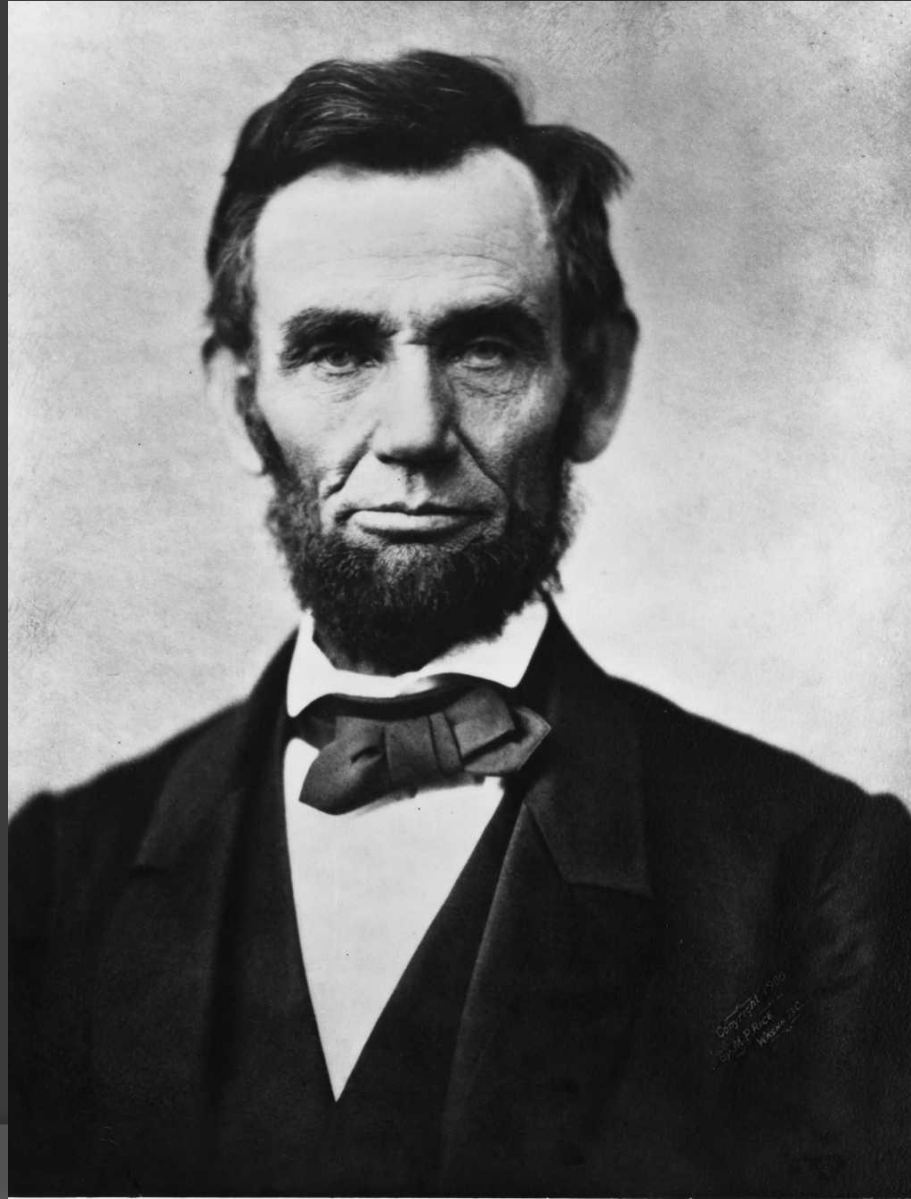
**CIVIL WAR**

**1861-1865**

# Map of States During Civil War



# Abraham Lincoln



# Jefferson Davis



# North

## ⦿ Strengths:

- Railroads

- Industry

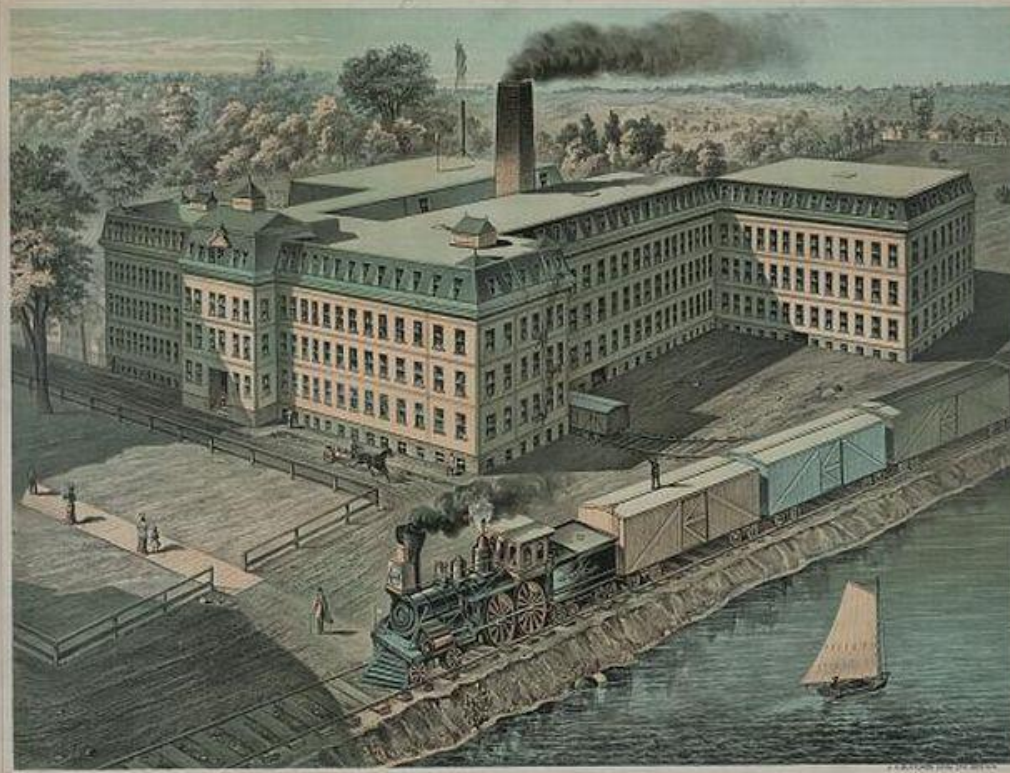
- Population (22 million v. 9 million)

# Railroads



**RAILROADS, 1850 AND 1860**

# Industry



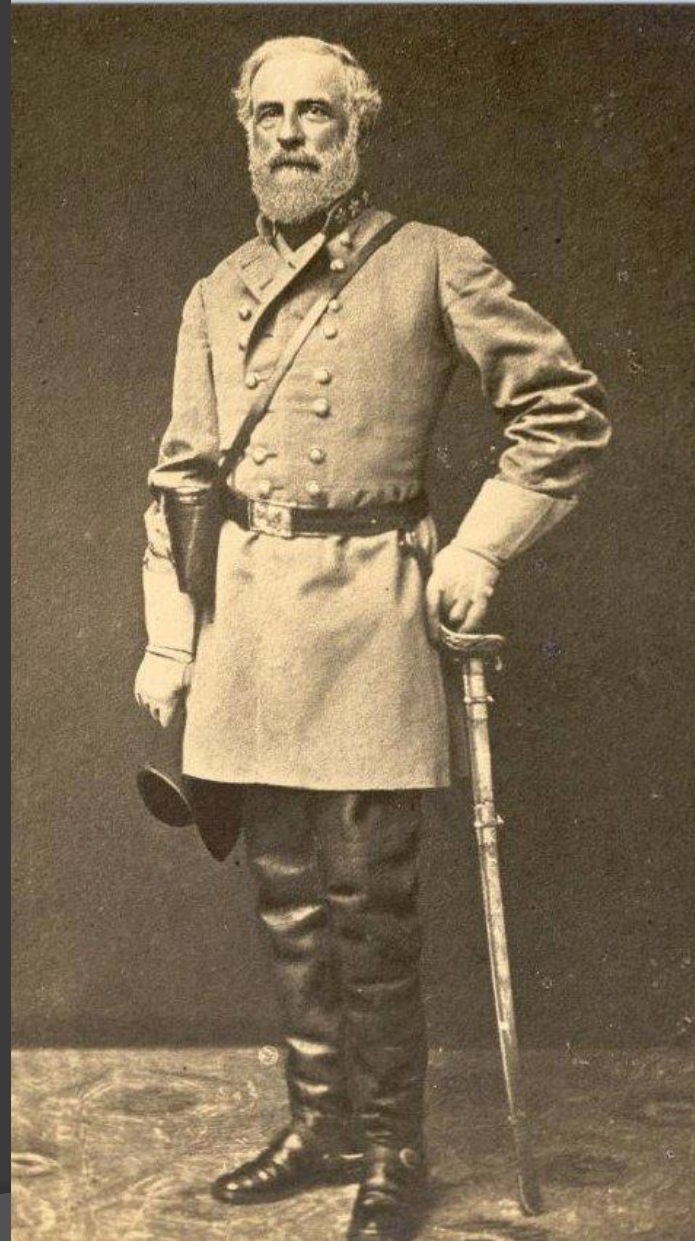
FREDERICK JONES & CO'S SHOE FACTORY,  
PLYMOUTH, MASS.

# South

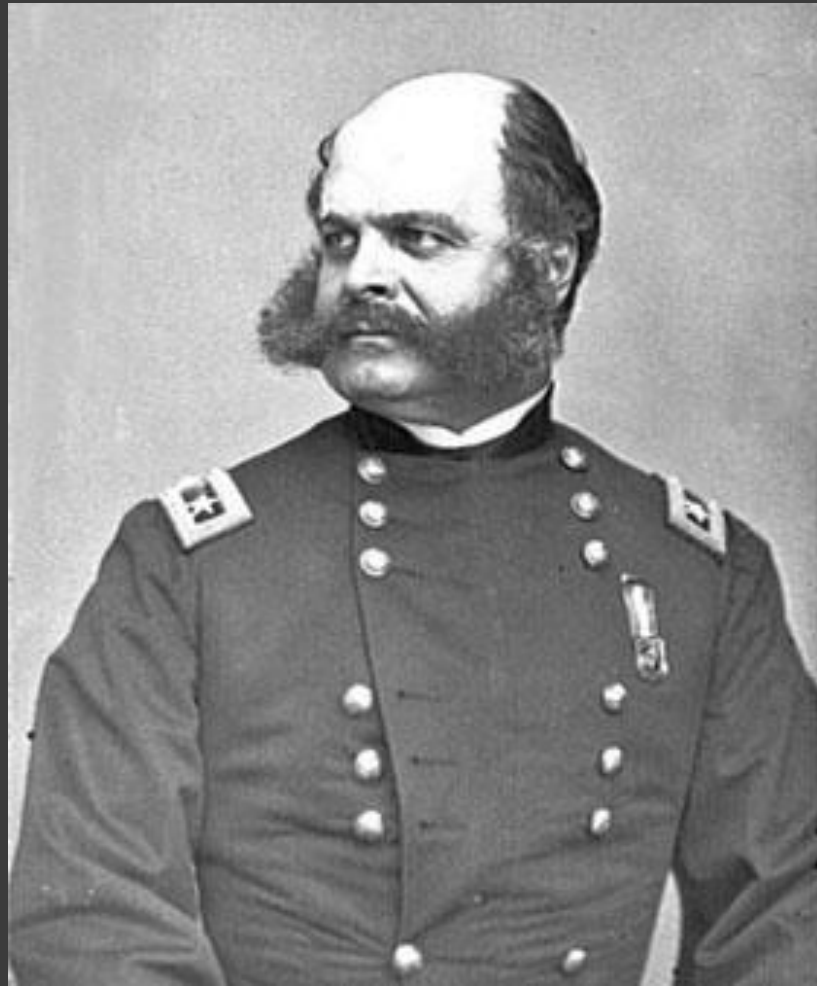
## ● Strengths

- Military Experience
- Supply Lines

# Military Skills



North had difficulty finding a  
good general



# U.S. Grant

